

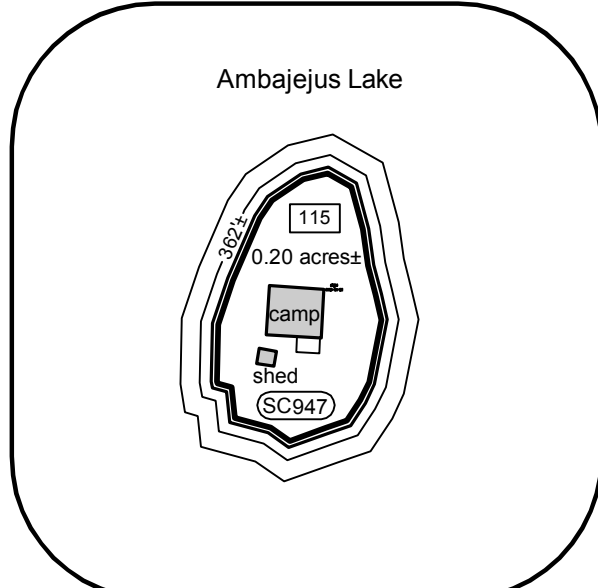
STATE OF MAINE

PISCATAQUIS, SS.  
REGISTRY OF DEEDS  
RECEIVED AND FILED

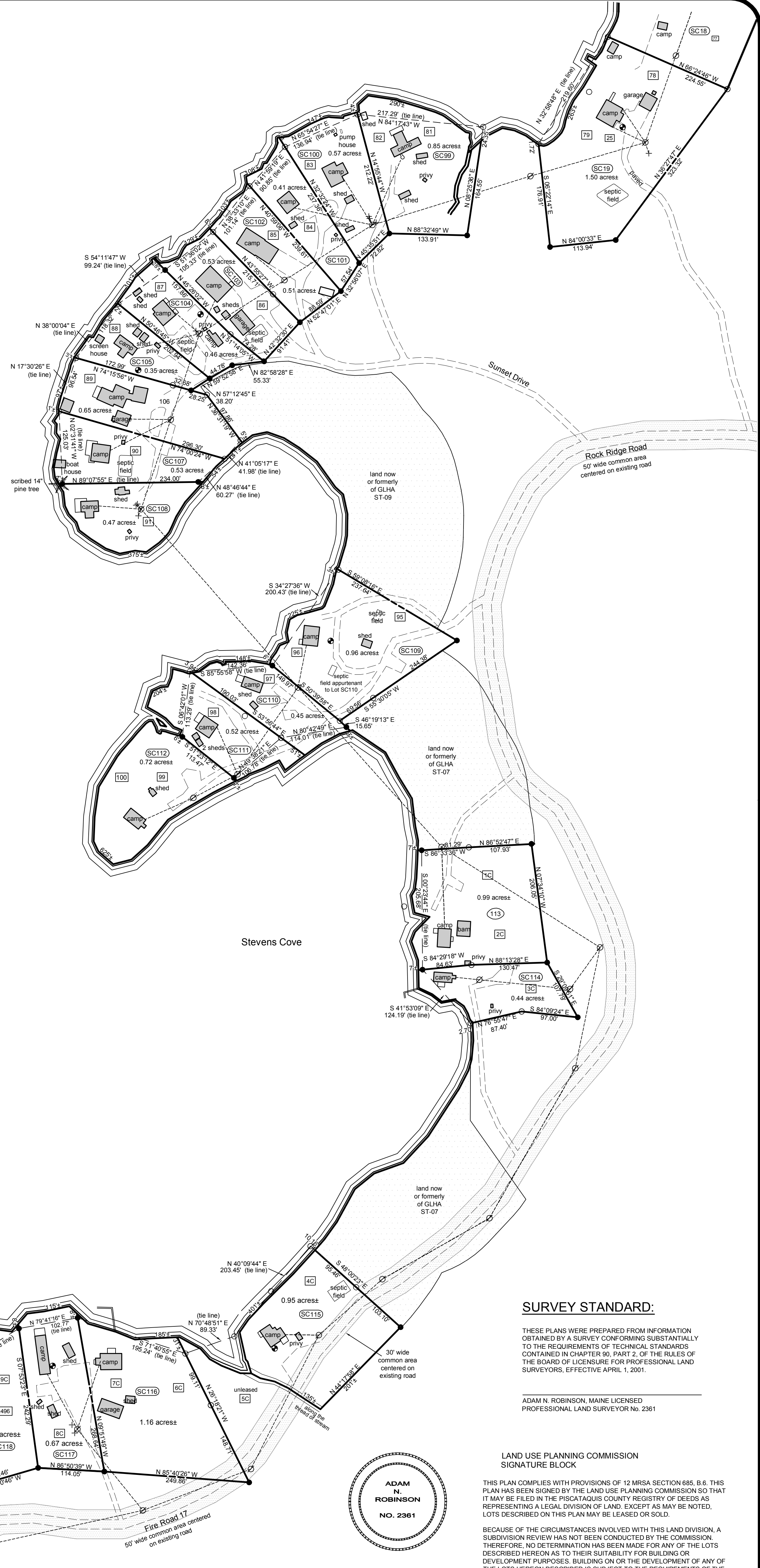
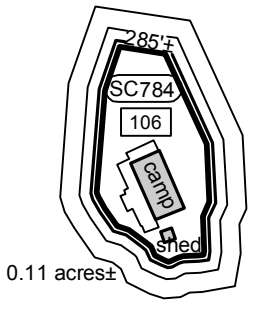
\_\_\_\_\_ 20 \_\_\_\_\_ M.

Attest \_\_\_\_\_ Register

RECORDED AS MAP FILE: \_\_\_\_\_



Ambajeus Lake

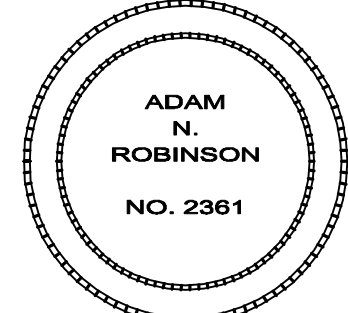


**SURVEY STANDARD:**

THESE PLANS WERE PREPARED FROM INFORMATION OBTAINED BY A SURVEY CONFORMING SUBSTANTIALLY TO THE REQUIREMENTS OF TECHNICAL STANDARDS CONTAINED IN CHAPTER 90, PART 2, OF THE RULES OF THE BOARD OF LICENSURE FOR PROFESSIONAL LAND SURVEYORS, EFFECTIVE APRIL 1, 2001.

ADAM N. ROBINSON, MAINE LICENSED PROFESSIONAL LAND SURVEYOR NO. 2361

LAND USE PLANNING COMMISSION  
SIGNATURE BLOCK



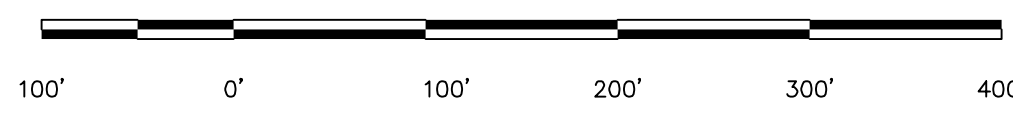
THIS PLAN COMPLIES WITH PROVISIONS OF 12 MRS. SECTION 685, B.6. THIS PLAN HAS BEEN SIGNED BY THE LAND USE PLANNING COMMISSION SO THAT IT MAY BE FILED IN THE PISCATAQUIS COUNTY REGISTRY OF DEEDS AS REPRESENTING A LEGAL DIVISION OF LAND, EXCEPT AS MAY BE NOTED, LOTS DESCRIBED ON THIS PLAN MAY BE LEASED OR SOLD.

BECAUSE OF THE CIRCUMSTANCES INVOLVED WITH THIS LAND DIVISION, A SUBDIVISION REVIEW HAS NOT BEEN CONDUCTED BY THE COMMISSION. THEREFORE, NO DETERMINATION HAS BEEN MADE FOR ANY OF THE LOTS DESCRIBED HEREON AS TO THEIR SUITABILITY FOR BUILDING OR DEVELOPMENT PURPOSES. BUILDING OR THE DEVELOPMENT OF ANY OF THE LOTS HEREON DESCRIBED IS SUBJECT TO THE REQUIREMENTS OF THE MAINE LAND USE PLANNING COMMISSION. FOR MORE INFORMATION, CONTACT THE LAND USE PLANNING COMMISSION.

FILE REFERENCE:

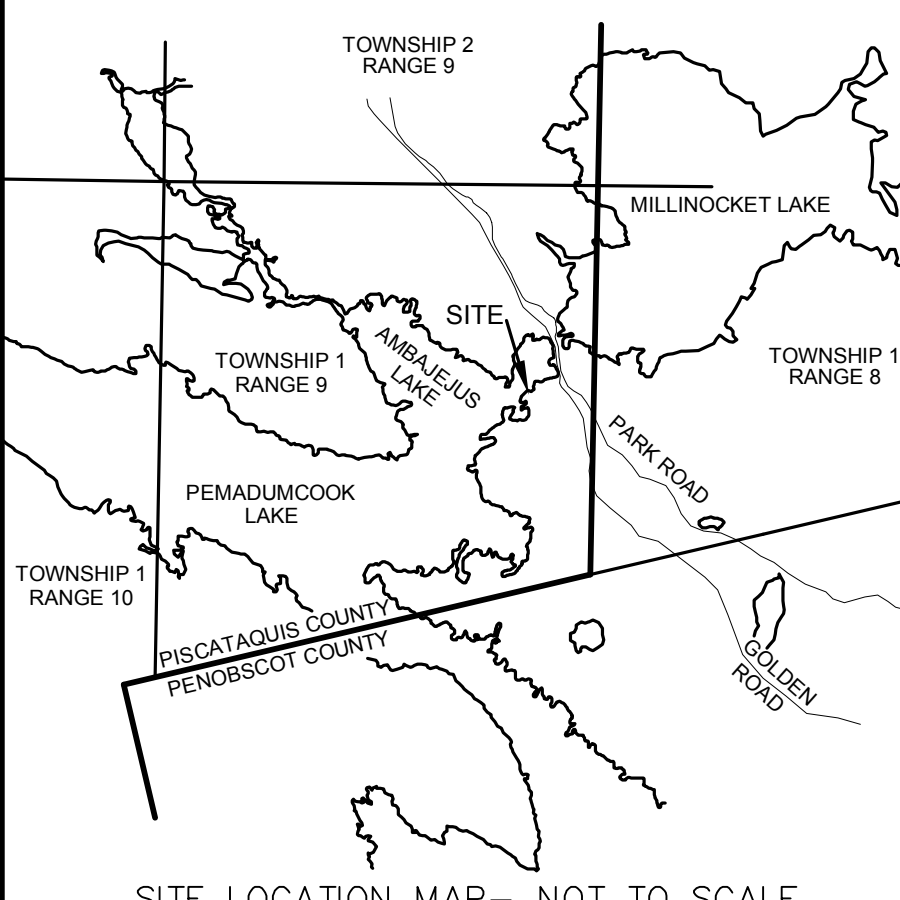
By: \_\_\_\_\_ DATE: \_\_\_\_\_  
Director, Land Use Planning Commission

SCALE: 1" = 100'



**LEGEND:**

- IRON REBAR SET
- IRON ROD/PIPE FOUND
- WOOD POST FOUND
- WELL/SPRING
- ⊕ UTILITY POLE
- ⊕ GUY/ANCHOR
- ▭ BUILDING/SHED
- ▭ PROPANE TANK
- ▭ STONE WALL
- TREE LINE
- PROPERTY LINE
- OVERHEAD WIRES
- GRAVEL ROAD/DRIVEWAY
- CULVERT
- NEW LOT NUMBERS
- OLD LOT NUMBERS
- ▭ COMMON AREA



**NOTES**

- (1) DOCUMENTS REFERENCED ON THIS PLAN ARE RECORDED IN THE PISCATAQUIS COUNTY REGISTRY OF DEEDS UNLESS OTHERWISE NOTED.
- (2) THE FULL POND ELEVATION OF AMBAJEUS LAKE IS DEFINED AS ELEVATION 491.92 FEET AS REFERENCED TO THE USGS DATUM.
- (3) LAND BELOW THE 491.92 FOOT CONTOUR LINE IS OWNED BY GREAT LAKES HYDRO AMERICA, LLC. LOTS ABUTTING THIS LAND ARE SUBJECT TO RESTRICTIVE COVENANTS RECORDED WITH EACH DEED.
- (4) BEARINGS ARE ORIENTED TO GRID NORTH OF THE MAINE STATE COORDINATE SYSTEM, EAST ZONE, NAD 83.
- (5) DISTANCES SHOWN ON THIS PLAN ARE GRID DISTANCES REFERENCED TO THE MAINE STATE COORDINATE SYSTEM, EAST ZONE, NAD 83.
- (6) COORDINATES CITED HEREON ARE REFERENCED TO THE MAINE STATE COORDINATE SYSTEM, EAST ZONE, NAD 83.
- (7) THE FIELD LOCATION OF IMPROVEMENTS DEPICTED ON THIS SHEET WAS COMPLETED IN AUGUST 2007.
- (8) IRON RODS SET NEAR THE 491.92 CONTOUR ARE LOCATED ±5' THEREFROM UNLESS OTHERWISE NOTED.

**PLISGA & DAY**  
LAND SURVEYORS  
72 MAIN STREET  
BANGOR, ME 04401  
(207) 947-0019

SHEET TITLE  
**Final Survey Plan**  
Ambajeus Lake Lots  
Township 1 Range 9 WELS - Piscataquis County Maine  
Record Owner:  
**Katahdin Timberlands LLC**  
4 Hill Street  
Millinocket, Maine  
Spencer Cove - Series

DWG: 07151  
DATE: October 11, 2013  
SCALE: 1"=100'

SHEET: 1 OF 11