

STATE OF MAINE

PISCATAQUIS, SS.
REGISTRY OF DEEDS
RECEIVED AND FILED

OCT. 23 2013

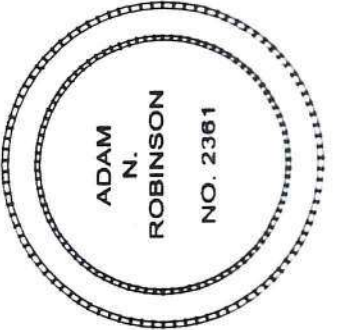
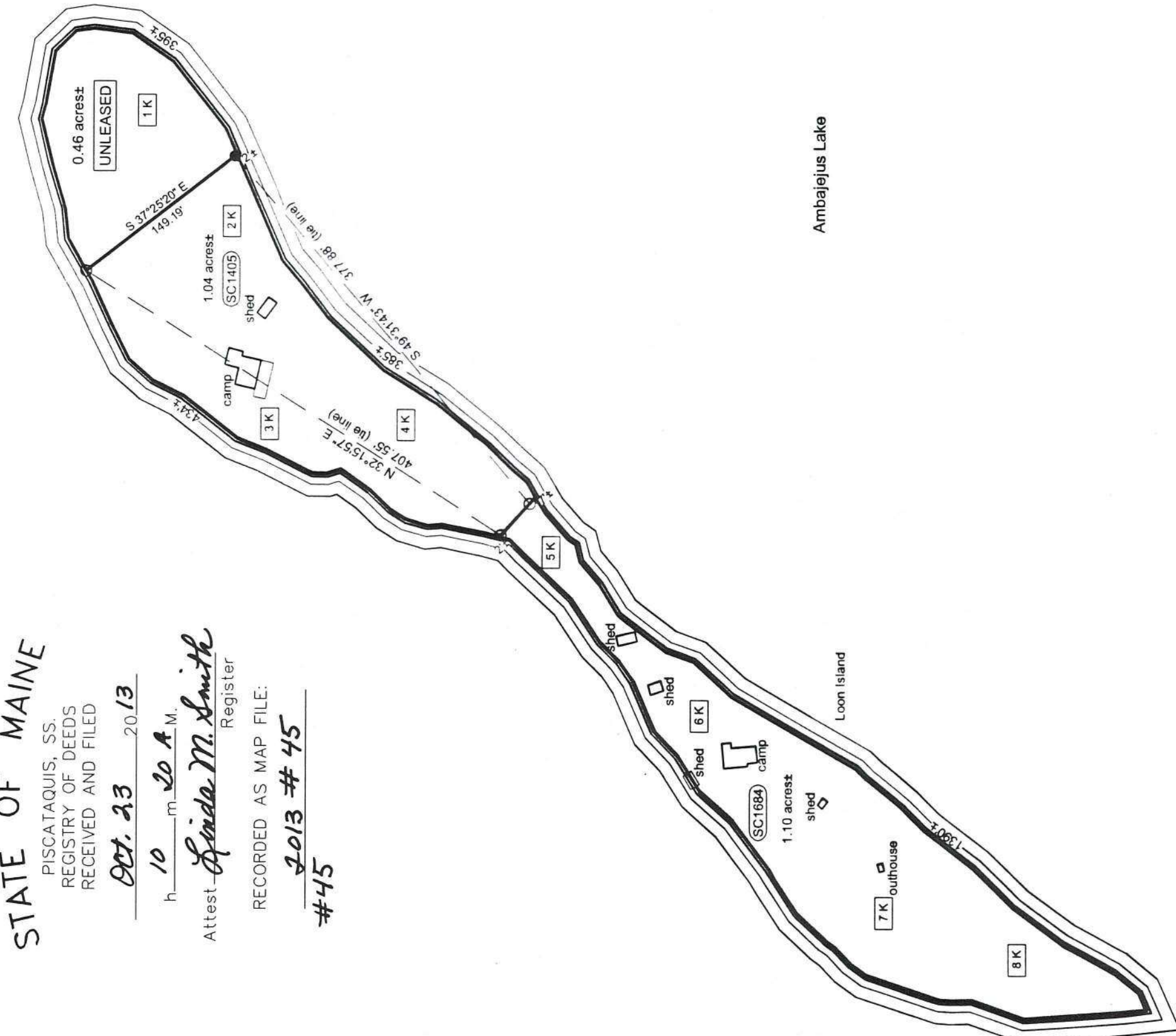
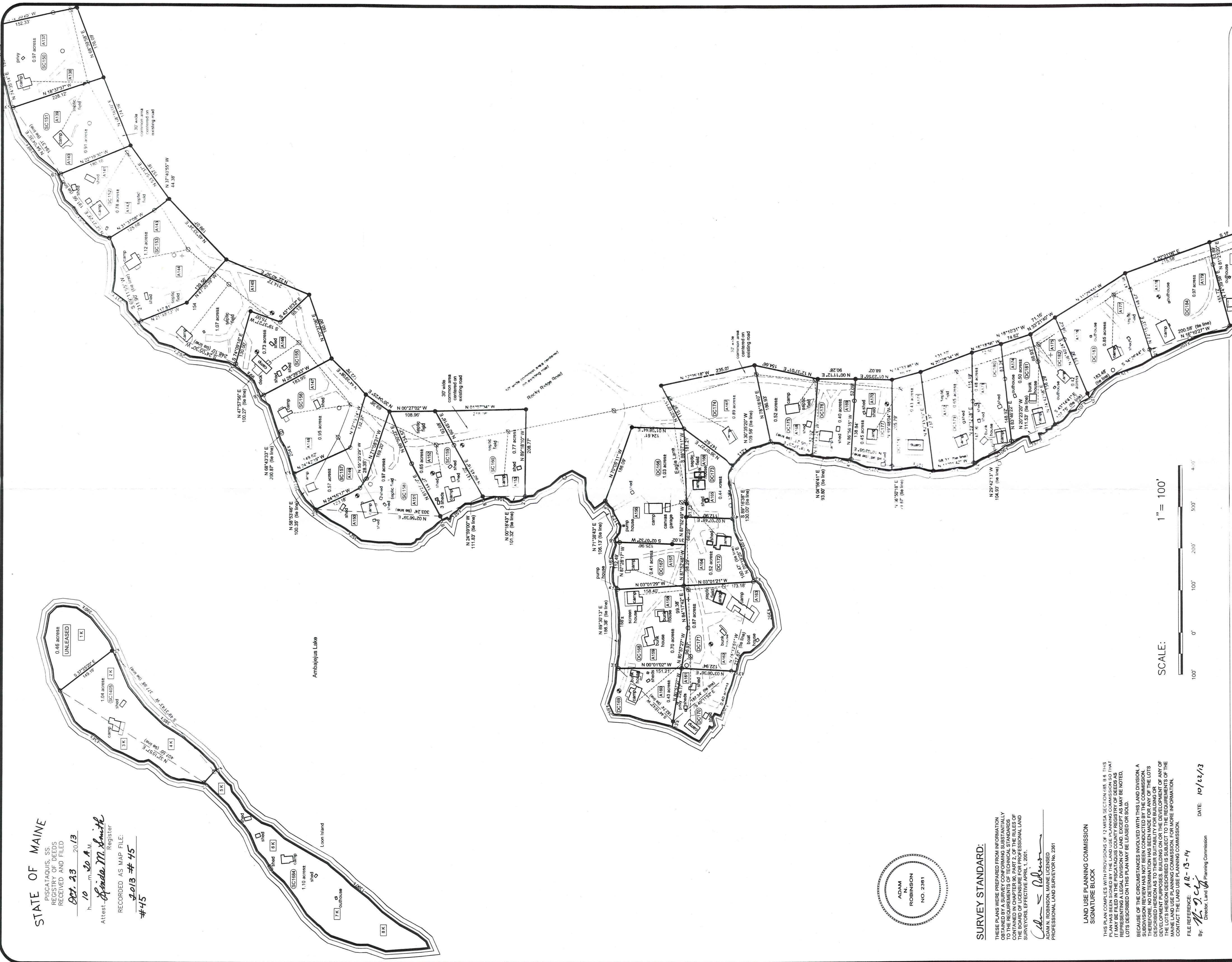
h 10 a.m. to 4 p.m.

Attest: *Spinda M. Smith*
Register

RECORDED AS MAP FILE:

2013 # 45

#45



SURVEY STANDARD:

THESE PLANS WERE PREPARED FROM INFORMATION OBTAINED BY A SURVEY CONFORMING SUBSTANTIALLY TO THE REQUIREMENTS OF TECHNICAL STANDARDS OF THE BOARD OF LICENSURE FOR PROFESSIONAL LAND SURVEYORS, EFFECTIVE APRIL 1, 2001.

Adam N. Robinson
PROFESSIONAL LAND SURVEYOR NO. 2381

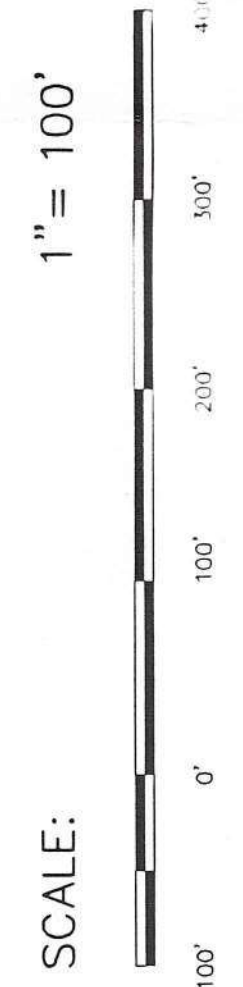
LAND USE PLANNING COMMISSION SIGNATURE BLOCK

THIS PLAN COMPLES WITH PROVISIONS OF 10 MARS, REVISED AS OF 2011, AS AMENDED BY THE MAINE LAND USE PLANNING COMMISSION SO THAT IT MAY BE FILED IN THE PISCATAQUIS COUNTY REGISTRY OF DEEDS AS REPRESENTING A LEGAL DIVISION OF LAND, EXCEPT AS MAY BE NOTED. LOTS DESCRIBED ON THIS PLAN MAY BE LEASED OR SOLD.

BECAUSE OF THE CIRCUMSTANCES INVOLVED WITH THIS LAND DIVISION, A DETERMINATION HAS BEEN MADE FOR ANY OF THE LOTS DESCRIBED HEREON AS TO THEIR SUITABILITY FOR BUILDING OR OTHER DEVELOPMENT. THE DETERMINATION IS SUBJECT TO THE REQUIREMENTS OF THE MAINE LAND USE PLANNING COMMISSION. FOR MORE INFORMATION, CONTACT THE LAND USE PLANNING COMMISSION.

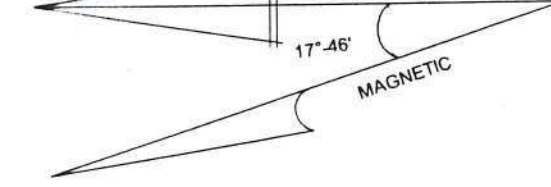
FILE REFERENCE: **12-13-14**

By: *M. J. C.* Director, Land Use Planning Commission
DATE: 10/22/13

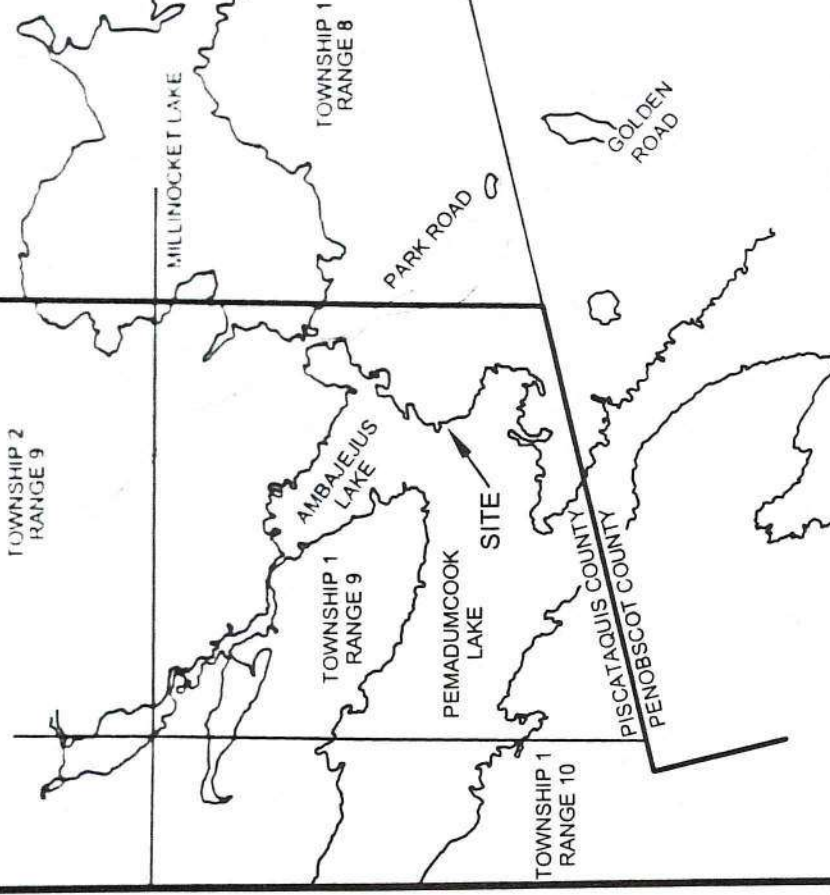


LEGEND:

- IRON REBAR SET
- IRON ROD SET
- WOOD POST FOUND
- WELL SPRING
- UTILITY POLE
- ⊕ GUY ANCHOR
- ▭ BUILDING
- ▭ PROPANE TANK
- ▭ STONE WALL
- ▭ TREE LINE
- ▭ PROPERTY LINE
- ▭ OVERHEAD WIRES
- ▭ GRAVEL ROAD/DRIVEWAY
- ▭ CULVERT
- GRID NORTH
- GRID EAST ZONE
- NAD 83
- NEW LOT NUMBERS
- OLD LOT NUMBERS
- ▭ COMMON AREA



SITE LOCATION MAP - NOT TO SCALE



NOTES

- (1) DOCUMENTS REFERENCED ON THIS PLAN ARE RECORDED IN THE PISCATAQUIS COUNTY REGISTRY OF DEEDS UNLESS OTHERWISE NOTED.
- (2) THE FULL POUND ELEVATION OF AMBAJELUS LAKE IS DEFINED AS ELEVATION 111.72 FEET AS REFERENCED TO THE USGS DATUM.
- (3) LAND BELOW THE 41' 12" FOOT CONTOUR LINE IS OWNED BY GREAT LAKES HYDRO AMERICA, LLC. LOTS ABUTTING THIS LAND ARE SUBJECT TO RESTRICTIVE COVENANTS INCORPORATED WITH EACH DEED.
- (4) BEARINGS ARE GIVEN TO GRID NORTH OF THE MAINE STATE COORDINATE SYSTEM, EAST ZONE, NAD 83.
- (5) DISTANCES SHOWN ON THIS PLAN ARE GRID DISTANCES REFERENCED TO THE MAINE STATE COORDINATE SYSTEM, EAST ZONE, NAD 83.
- (6) COORDINATES LISTED HEREON ARE REFERENCED TO THE MAINE STATE COORDINATE SYSTEM, EAST ZONE, NAD 83.
- (7) THE FIELD LOCATION OF IMPROVEMENTS DEPICTED ON THIS SHEET WAS COMPLETED IN AUGUST, 2007.
- (8) IRON RODS SET NEAR THE 41' 12" CONTOUR ARE LOCATED 45' THEREFROM UNLESS OTHERWISE NOTED.

PLISGA & DAY

LAND SURVEYORS
72 MAIN STREET
BANGOR, ME 04401
(207) 947-6019

SHEET TITLE

Final Survey Plan
Ambajelus Lake Lots

Township 1 Range 9 WELS - Piscataquis County Maine
Record Owner:
Katahdin Timberlands LLC
4 Hill Street
Millbrook, Maine
Deep Cove & Spencer Cove - Series

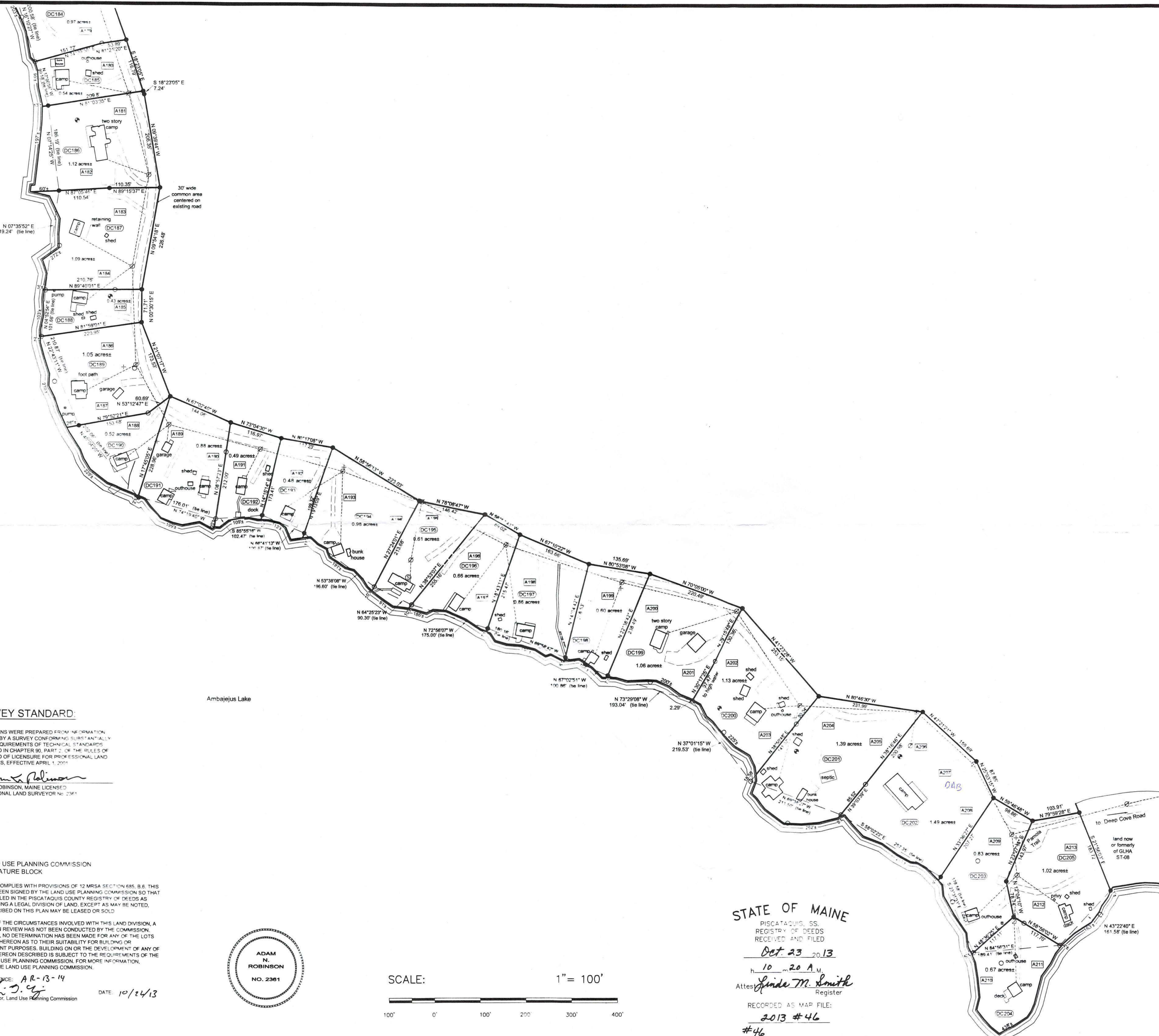
3

SHEET: 3 OF 11

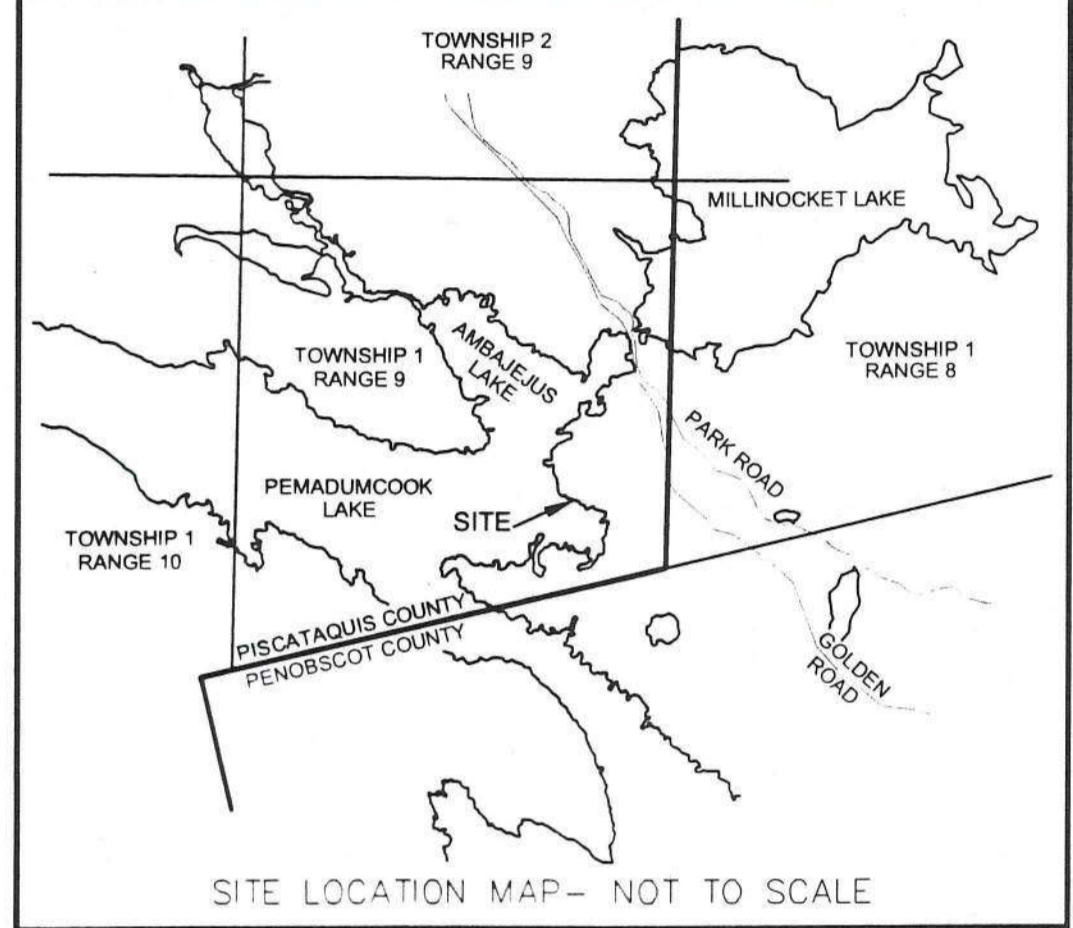
DWG: 07151

DATE: October 11, 2013

SCALE: 1"=100'



- NOTES**
- (1) DOCUMENTS REFERENCED ON THIS PLAN ARE RECORDED IN THE PISCATAQUIS COUNTY REGISTRY OF DEEDS UNLESS OTHERWISE NOTED.
 - (2) THE FULL POND ELEVATION OF AMBEJEUUS LAKE IS DEFINED AS ELEVATION 491.92 FEET AS REFERENCED TO THE USGS DATUM.
 - (3) LAND BELOW THE 491.92 FOOT CONTOUR LINE IS OWNED BY GREAT LAKES HYDRO AMERICA, LLC. LOTS ABUTTING THIS LAND ARE SUBJECT TO RESTRICTIVE COVENANTS RECORDED WITH EACH DEED.
 - (4) BEARINGS ARE ORIENTED TO GRID NORTH OF THE MAINE STATE COORDINATE SYSTEM, EAST ZONE, NAD 83.
 - (5) DISTANCES SHOWN ON THIS PLAN ARE GRID DISTANCES REFERENCED TO THE MAINE STATE COORDINATE SYSTEM, EAST ZONE, NAD 83.
 - (6) COORDINATES CITED HEREON ARE REFERENCED TO THE MAINE STATE COORDINATE SYSTEM, EAST ZONE, NAD 83.
 - (7) THE FIELD LOCATION OF IMPROVEMENTS DEPICTED ON THIS SHEET WAS COMPLETED IN AUGUST 2007.
 - (8) IRON RODS SET NEAR THE 491.92 CONTOUR ARE LOCATED ±5' THEREFROM UNLESS OTHERWISE NOTED.



LEGEND:

- IRON REBAR SET
- IRON ROD/PIPE FOUND
- ⊠ WOOD POST FOUND
- ⊕ WELL/SPRING
- ⚡ UTILITY POLE
- ⊙ GUYANCHOR
- ▭ BUILDING/SHED
- ▭ PROPANE TANK
- ▭ STONE WALL
- ▭ TREE LINE
- ▭ PROPERTY LINE
- ▭ OVERHEAD WIRES
- ▭ GRAVEL ROAD/DRIVEWAY
- ▭ CULVERT
- 10 NEW LOT NUMBERS
- 10 OLD LOT NUMBERS
- ▭ COMMON AREA

SURVEY STANDARD:

THESE PLANS WERE PREPARED FROM INFORMATION OBTAINED BY A SURVEY CONFORMING SUBSTANTIALLY TO THE REQUIREMENTS OF TECHNICAL STANDARDS CONTAINED IN CHAPTER 90 PART 2 OF THE RULES OF THE BOARD OF LICENSURE FOR PROFESSIONAL LAND SURVEYORS, EFFECTIVE APRIL 1, 2001.

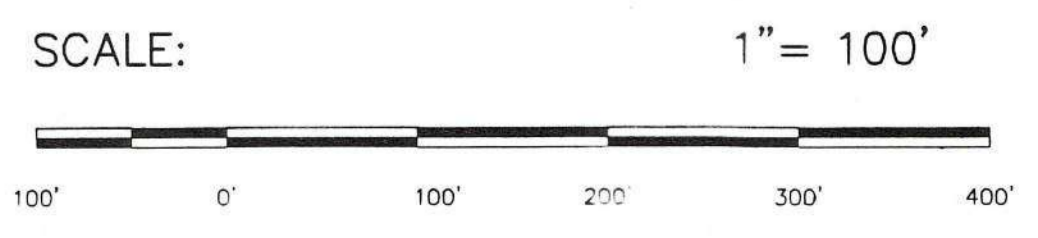
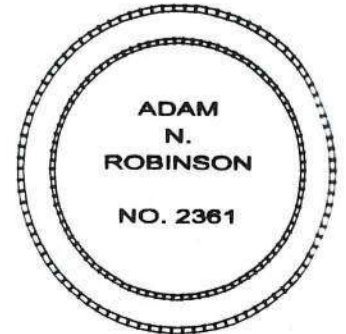
Adam N. Robinson
 ADAM N. ROBINSON, MAINE LICENSED PROFESSIONAL LAND SURVEYOR No. 2361

LAND USE PLANNING COMMISSION SIGNATURE BLOCK

THIS PLAN COMPLIES WITH PROVISIONS OF 12 MRSA SECTION 685, B.6. THIS PLAN HAS BEEN SIGNED BY THE LAND USE PLANNING COMMISSION SO THAT IT MAY BE FILED IN THE PISCATAQUIS COUNTY REGISTRY OF DEEDS AS REPRESENTING A LEGAL DIVISION OF LAND, EXCEPT AS MAY BE NOTED, LOTS DESCRIBED ON THIS PLAN MAY BE LEASED OR SOLD.

BECAUSE OF THE CIRCUMSTANCES INVOLVED WITH THIS LAND DIVISION, A SUBDIVISION REVIEW HAS NOT BEEN CONDUCTED BY THE COMMISSION. THEREFORE, NO DETERMINATION HAS BEEN MADE FOR ANY OF THE LOTS DESCRIBED HEREON AS TO THEIR SUITABILITY FOR BUILDING OR DEVELOPMENT PURPOSES. BUILDING ON OR THE DEVELOPMENT OF ANY OF THE LOTS HEREON DESCRIBED IS SUBJECT TO THE REQUIREMENTS OF THE MAINE LAND USE PLANNING COMMISSION. FOR MORE INFORMATION, CONTACT THE LAND USE PLANNING COMMISSION.

FILE REFERENCE: AR-13-14
 By: *W.D.C.* Director, Land Use Planning Commission DATE 10/24/13



STATE OF MAINE

PISCATAQUIS, SS.
 REGISTRY OF DEEDS
 RECEIVED AND FILED
 Oct 23 2013
 10 20 A.M.
 Attest *Heide M. Smith* Register
 RECORDED AS MAP FILE:
 2013 # 46
 #46

SHEET TITLE
Final Survey Plan
 Ambajeuus Lake Lots
 Township 1 Range 9 WELS - Piscataquis County Maine
 Record Owner:
Katahdin Timberlands LLC
 4 Hill Street
 Millinocket, Maine
 Deep Cove - Series

PLISGA & DAY
 LAND SURVEYORS
 72 MAIN STREET
 BANGOR, ME 04401
 (207) 947-0019

| | | | |
|--------|------------------|--------|---------|
| DWG: | 07151 | SHEET: | 4 OF 11 |
| DATE: | October 11, 2013 | | |
| SCALE: | 1"=100' | | |