



LAND USE PLANNING COMMISSION  
SIGNATURE BLOCK

THIS PLAN COMPLIES WITH PROVISIONS OF 12 MRSA SECTION 685, B.6. THIS PLAN HAS BEEN SIGNED BY THE LAND USE PLANNING COMMISSION SO THAT IT MAY BE FILED IN THE PISCATAQUIS COUNTY REGISTRY OF DEEDS AS A LAND USE PLANNING COMMISSION PLAN. IF ANY OF THE LOTS DESCRIBED ON THIS PLAN MAY BE LEASED OR SOLD,

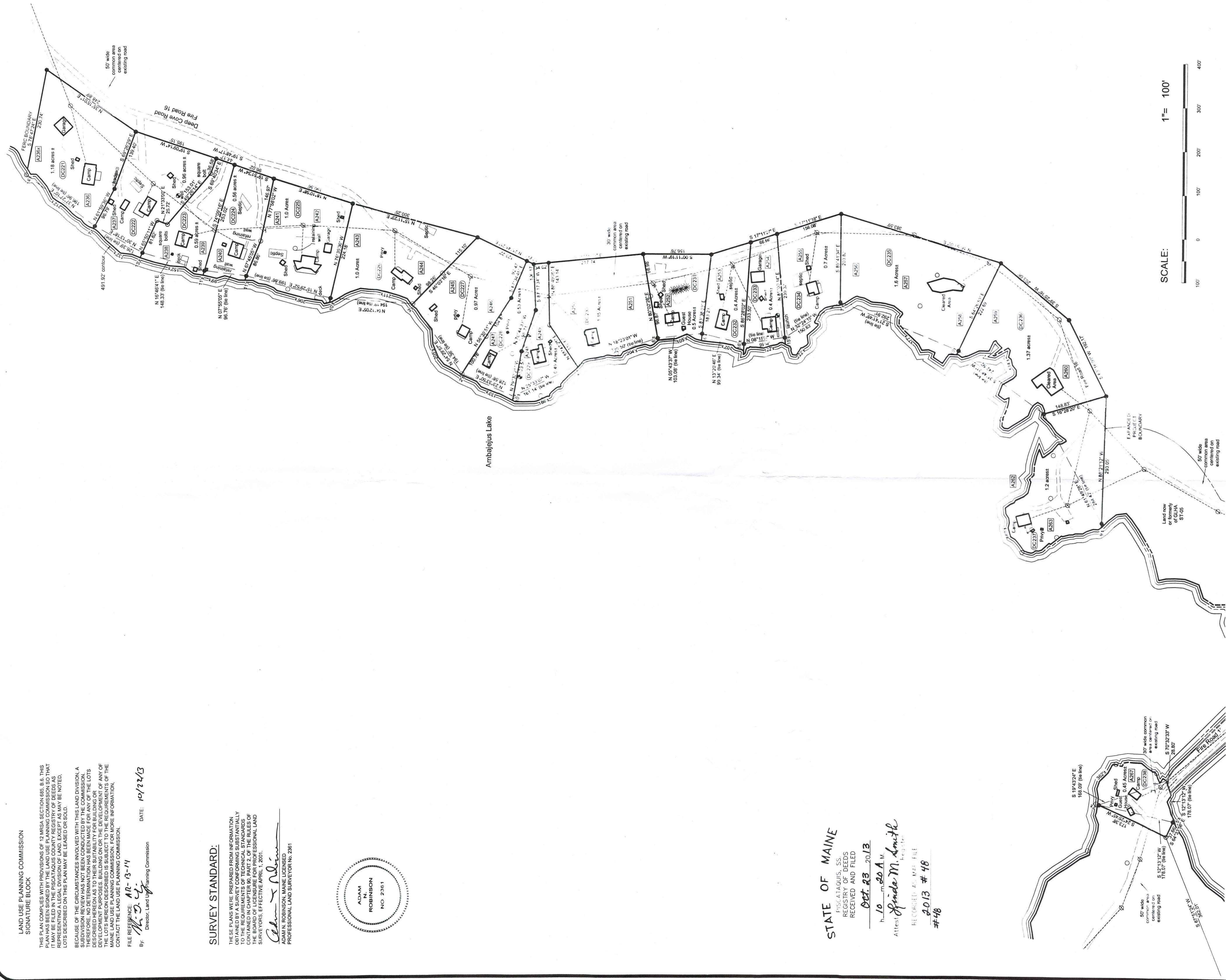
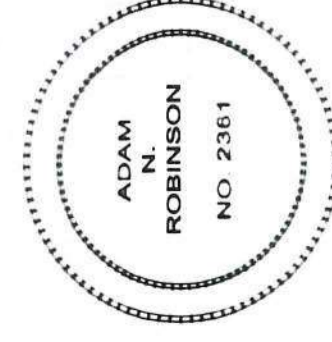
BECAUSE OF THE CIRCUMSTANCES INVOLVED WITH THIS LAND DIVISION, A SUBDIVISION REVIEW HAS NOT BEEN CONDUCTED BY THE COMMISSION. THEREFORE, NO DETERMINATION HAS BEEN MADE FOR ANY OF THE LOTS DESCRIBED ON THIS PLAN AS TO WHETHER THEY COMPLY WITH THE REQUIREMENTS OF ANY OF THE DEVELOPMENT PURPOSES, INCLUDING, BUT NOT LIMITED TO, THE DEVELOPMENT PURPOSES SET FORTH IN CHAPTER 90, PART 2, OF THE RULES OF THE BOARD OF LICENSURE FOR PROFESSIONAL LAND SURVEYORS, EFFECTIVE APRIL 1, 2011.

FILE REFERENCE: A12-13-11 DATE: 10/22/13  
By: [Signature] Director, Land Use Planning Commission

SURVEY STANDARD:

THESE PLANS WERE PREPARED FROM INFORMATION OBTAINED FROM THE PISCATAQUIS COUNTY REGISTRY OF DEEDS AND THE RECORDS OF THE PISCATAQUIS COUNTY REGISTER OF DEEDS, AS CONTAINED IN CHAPTER 90, PART 2, OF THE RULES OF THE BOARD OF LICENSURE FOR PROFESSIONAL LAND SURVEYORS, EFFECTIVE APRIL 1, 2011.

[Signature]  
ADAM N. ROBINSON, MAINE LICENSED  
PROFESSIONAL LAND SURVEYOR NO. 2261



SCALE: 1" = 100'  
100' 0 100' 200' 300' 400'

STATE OF MAINE

PISCATAQUIS, SS.  
REGISTRY OF DEEDS  
RECEIVED AND FILED

Oct. 23 2013

h. 10 m. 20 A. M.

Attest: [Signature] Spide M. Smith

RECORDED AS MAP FILE

2013 # 48

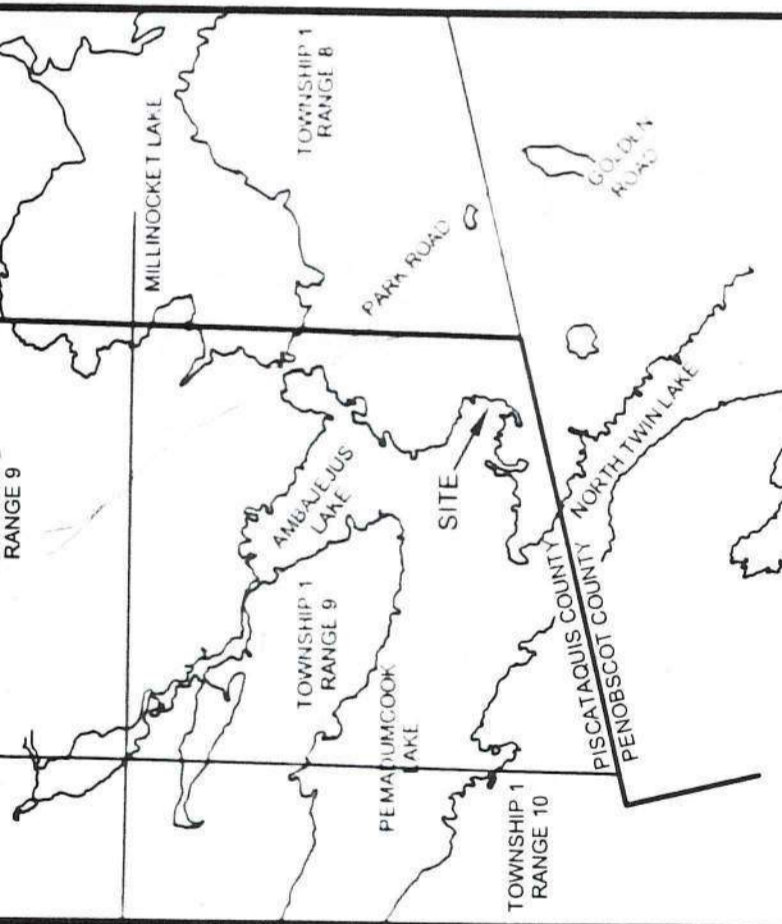
# 48

LEGEND:

- IRON REBAR SET
- WOODPOST FOUND
- WOODPOST FOUND
- WELL FOUND
- UTILITY POLE
- GUY WIRE
- BUILDING/SHEED
- PREPARED TANK
- STORE WALL
- TRAIL LINE
- PROPERTY LINE
- OVERHEAD WIRES
- GRAVEL ROAD/DRIVEWAY
- CULVERT
- NEW LOT NUMBERS
- OLD LOT NUMBERS
- COMMON AREA

NOTES

- (1) DOCUMENTS REFERENCED ON THIS PLAN ARE RECORDED IN THE PISCATAQUIS COUNTY REGISTRY OF DEEDS UNLESS OTHERWISE NOTED.
- (2) THE FULL POND ELEVATION OF AMBEJEUUS LAKE IS DEFINED AS ELEVATION 491 BY F.L. AS REFERENCED TO THE USGS DATUM.
- (3) LAND BELOW THE 491.92 FOOT CONTOUR LINE IS OWNED BY GREAT LAKES HYDRO AMERICA, L.L.C. LOTS ABUTTING THIS LAND ARE SUBJECT TO RESTRICTIVE COVENANTS RECORDED WITH EACH DEED.
- (4) BEARINGS ARE ORIENTED TO GRID NORTH OF THE MAINE STATE COORDINATE SYSTEM, EAST ZONE, NAD 83.
- (5) DISTANCES SHOWN ON THIS PLAN ARE GRID DISTANCES REFERENCED TO THE MAINE STATE COORDINATE SYSTEM, EAST ZONE, NAD 83.
- (6) COORDINATES CITED HEREON ARE REFERENCED TO THE MAINE STATE COORDINATE SYSTEM, EAST ZONE, NAD 83.
- (7) THE FIELD LOCATION OF IMPROVEMENTS DEPICTED ON THIS SHEET WAS COMPLETED IN AUGUST 2007.
- (8) IRON RODS SET IN A11, THE 491.92 CONTOUR ARE LOCATED 45' THEREFROM UNLESS OTHERWISE NOTED.



PLISGA & DAY  
LAND SURVEYORS  
72 MAIN STREET  
BANGOR, ME 04401  
(207) 947-0019

SHEET TITLE  
Final Survey Plan  
Ambejejus Lake Lots  
Township 1 Range 9 WELS - Piscataquis County Maine  
Record Owner:  
Katahdin Timberlands LLC  
4 Hill Street  
Millbrook, Maine  
Deep Cove - Series

SHEET: **6** OF 11

DWG: 0837  
DATE: October 11, 2013  
SCALE: 1"=100'