

STATE OF MAINE

PISCATAQUIS, SS.  
REGISTRY OF DEEDS  
RECEIVED AND FILED

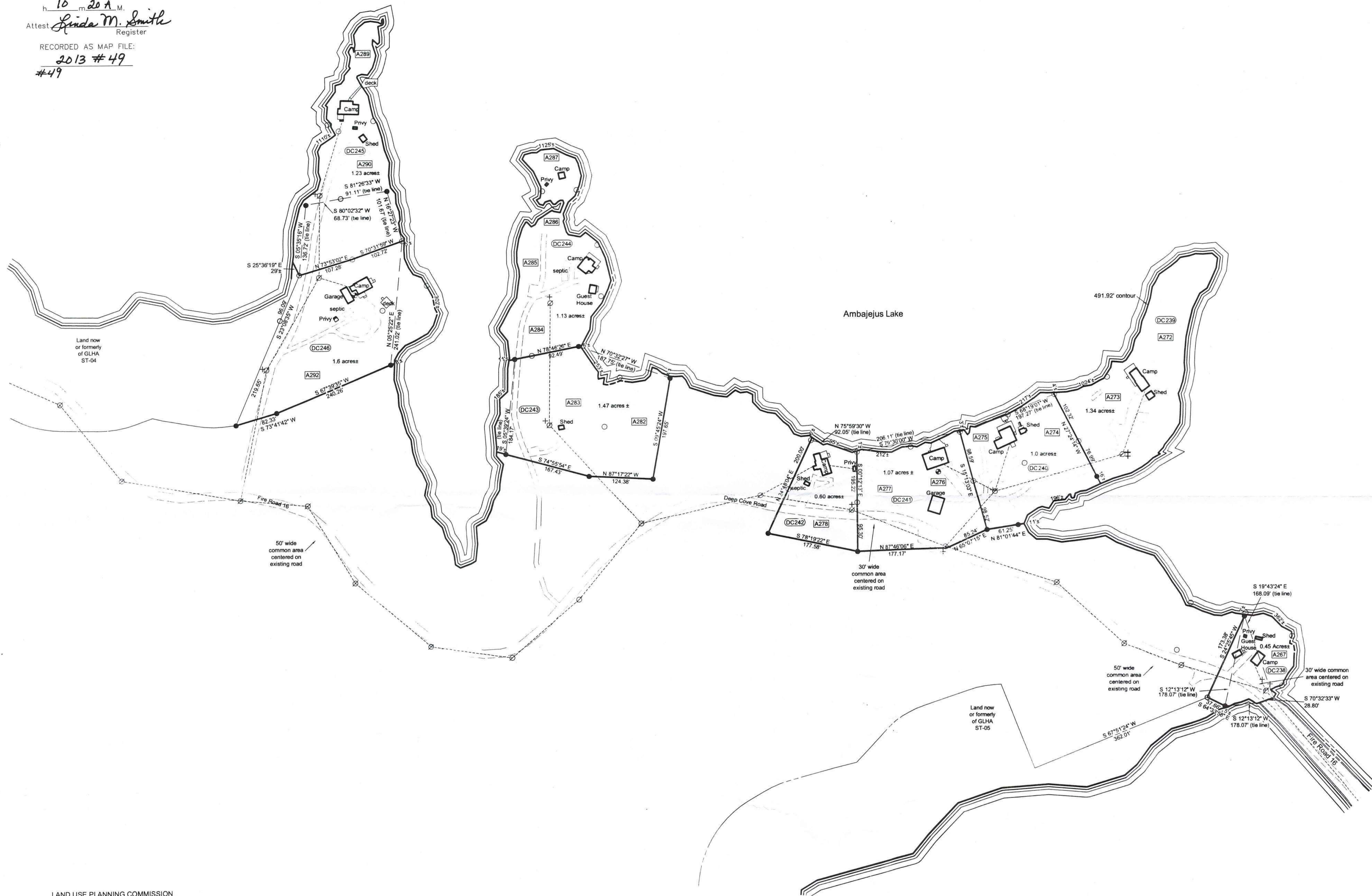
Oct. 23 2013

h 10 m 20 A.M.

Attest *Linda M. Smith*  
Register

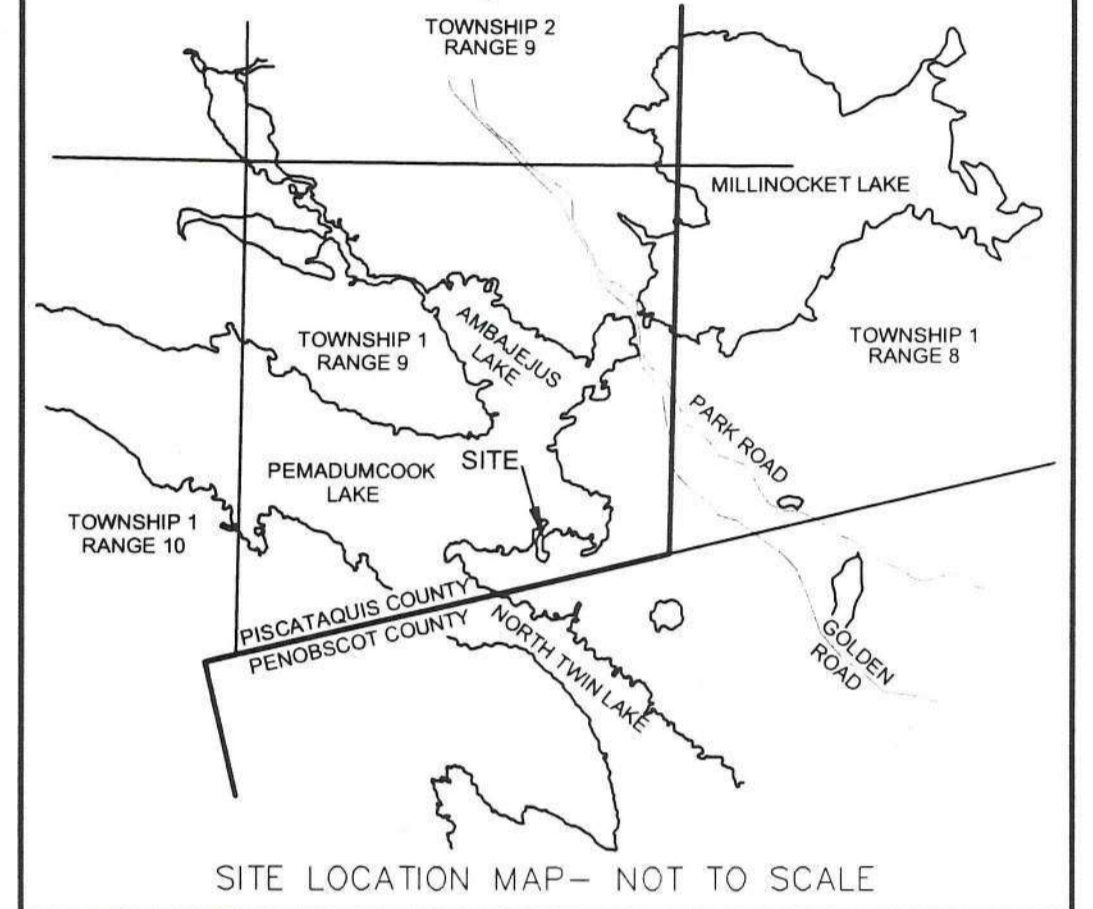
RECORDED AS MAP FILE:

2013 #49  
#49



NOTES

- (1) DOCUMENTS REFERENCED ON THIS PLAN ARE RECORDED IN THE PISCATAQUIS COUNTY REGISTRY OF DEEDS UNLESS OTHERWISE NOTED.
- (2) THE FULL POND ELEVATION OF AMBEJEJUS LAKE IS DEFINED AS ELEVATION 491.92 FEET AS REFERENCED TO THE USGS DATUM.
- (3) LAND BELOW THE 491.92 FOOT CONTOUR LINE IS OWNED BY GREAT LAKES HYDRO AMERICA, LLC. LOTS ABUTTING THIS LAND ARE SUBJECT TO RESTRICTIVE COVENANTS RECORDED WITH EACH DEED.
- (4) BEARINGS ARE ORIENTED TO GRID NORTH OF THE MAINE STATE COORDINATE SYSTEM, EAST ZONE, NAD 83.
- (5) DISTANCES SHOWN ON THIS PLAN ARE GRID DISTANCES REFERENCED TO THE MAINE STATE COORDINATE SYSTEM, EAST ZONE, NAD 83.
- (6) COORDINATES CITED HEREON ARE REFERENCED TO THE MAINE STATE COORDINATE SYSTEM, EAST ZONE, NAD 83.
- (7) THE FIELD LOCATION OF IMPROVEMENTS DEPICTED ON THIS SHEET WAS COMPLETED IN AUGUST 2007.
- (8) IRON RODS SET NEAR THE 491.92 CONTOUR ARE LOCATED ±5' THEREFROM UNLESS OTHERWISE NOTED.



LEGEND:

- IRON REBAR SET
- IRON ROD/PIPE FOUND
- ⊠ WOOD POST FOUND
- ⊕ WELLS/SPRING
- ⊙ UTILITY POLE
- ⊕ GUY/ANCHOR
- ▭ BUILDING/SHED
- PROPANE TANK
- STONE WALL
- TREE LINE
- PROPERTY LINE
- OVERHEAD WIRES
- GRAVEL ROAD/DRIVEWAY
- CULVERT
- 10 NEW LOT NUMBERS
- 10 OLD LOT NUMBERS
- COMMON AREA

LAND USE PLANNING COMMISSION  
SIGNATURE BLOCK

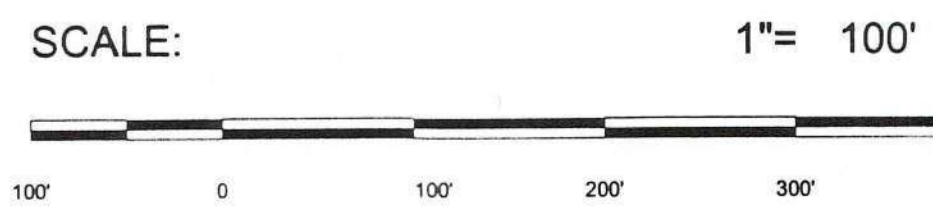
THIS PLAN COMPLIES WITH PROVISIONS OF 12 MRSA SECTION 685, B.6. THIS PLAN HAS BEEN SIGNED BY THE LAND USE PLANNING COMMISSION SO THAT IT MAY BE FILED IN THE PISCATAQUIS COUNTY REGISTRY OF DEEDS AS REPRESENTING A LEGAL DIVISION OF LAND, EXCEPT AS MAY BE NOTED. LOTS DESCRIBED ON THIS PLAN MAY BE LEASED OR SOLD.

BECAUSE OF THE CIRCUMSTANCES INVOLVED WITH THIS LAND DIVISION, A SUBDIVISION REVIEW HAS NOT BEEN CONDUCTED BY THE COMMISSION. THEREFORE, NO DETERMINATION HAS BEEN MADE FOR ANY OF THE LOTS DESCRIBED HEREON AS TO THEIR SUITABILITY FOR BUILDING OR DEVELOPMENT PURPOSES. BUILDING ON OR THE DEVELOPMENT OF ANY OF THE LOTS HEREON DESCRIBED IS SUBJECT TO THE REQUIREMENTS OF THE MAINE LAND USE PLANNING COMMISSION. FOR MORE INFORMATION, CONTACT THE LAND USE PLANNING COMMISSION.

FILE REFERENCE: AR-13-14

By: *H. J. G.*  
Director, Land Use Planning Commission

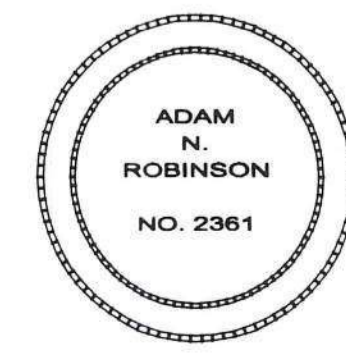
DATE: 10/22/13



SURVEY STANDARD:

THESE PLANS WERE PREPARED FROM INFORMATION OBTAINED BY A SURVEY CONFORMING SUBSTANTIALLY TO THE REQUIREMENTS OF TECHNICAL STANDARDS CONTAINED IN CHAPTER 90, PART 2, OF THE RULES OF THE BOARD OF LICENSURE FOR PROFESSIONAL LAND SURVEYORS, EFFECTIVE APRIL 1, 2001.

*Adam N. Robinson*  
ADAM N. ROBINSON, MAINE LICENSED  
PROFESSIONAL LAND SURVEYOR NO. 2361



SHEET TITLE

Final Survey Plan

Ambajejus Lake Lots

Township 1 Range 9 WELS - Piscataquis County Maine

Record Owner:

Katahdin Timberlands LLC

4 Hill Street

Millinocket, Maine

Deep Cove - Series

PLISGA & DAY

LAND SURVEYORS  
72 MAIN STREET  
BANGOR, ME 04401  
(207) 947-0019

DWG:	08137	SHEET:	7 OF 11
DATE:	October 11, 2013	SCALE:	
SCALE:	1"=100'		

STATE OF MAINE

PISCATAQUIS, SS.  
REGISTRY OF DEEDS  
RECEIVED AND FILED

Oct 23 2013

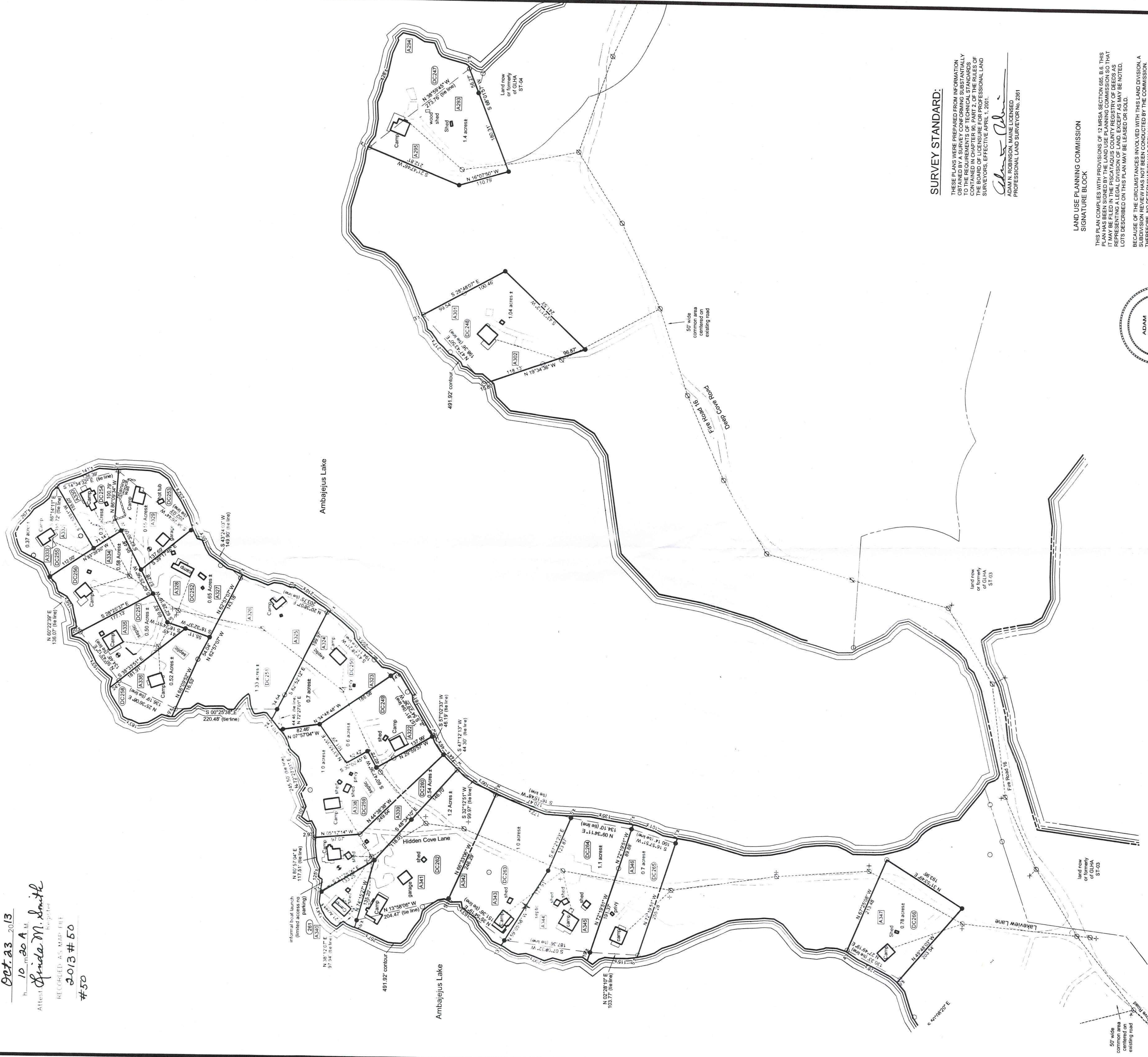
10 30 A.M.

Attest *Gilda M. Smith*  
Registry

RECORDED AS MAP FILE

2013 # 50

# 50



**SURVEY STANDARD:**

THESE PLANS WERE PREPARED FROM INFORMATION OBTAINED BY A SURVEY CONDUCTED IN ACCORDANCE WITH THE REQUIREMENTS OF TECHNICAL STANDARDS FOR SURVEYING, CHAPTER 30, PART 2, OF THE RULES OF THE BOARD OF PROFESSIONAL LAND SURVEYORS, EFFECTIVE APRIL 1, 2001.

ADAM N. ROBINSON, MAINE LICENSED PROFESSIONAL LAND SURVEYOR NO. 2361

*Adam N. Robinson*

**LAND USE PLANNING COMMISSION  
SIGNATURE BLOCK**

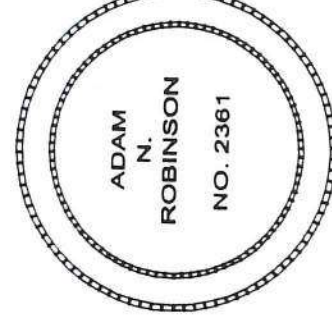
THIS PLAN COMPLIES WITH PROVISIONS OF 12 MRSA SECTION 866 B & 6. THIS PLAN IS NOT TO BE CONSIDERED A FINAL DECISION BY THE COMMISSION SO THAT IT MAY BE FILED IN THE PISCATAQUIS COUNTY PLANNING COMMISSION SO THAT REPRESENTING A LEGAL DIVISION OF LAND, EXCEPT AS MAY BE NOTED. LOTS DESCRIBED ON THIS PLAN MAY BE LEASED OR SOLD.

BECAUSE OF THE CIRCUMSTANCES INVOLVED WITH THIS LAND DIVISION, A DEVELOPMENT PLAN HAS NOT BEEN CONDUCTED BY THE COMMISSION. THEREFORE, NO DEVELOPMENT PLAN IS SHOWN ON THIS PLAN. THE LOTS DESCRIBED HEREON AS TO THEIR SUITABILITY FOR BUILDING OR DEVELOPMENT PURPOSES, BUILDING OR THE DEVELOPMENT OF ANY OF THE LOTS DESCRIBED HEREON IS NOT GUARANTEED BY THE COMMISSION. THE MAINE LAND USE PLANNING COMMISSION, FOR MORE INFORMATION, CONTACT THE LAND USE PLANNING COMMISSION.

FILE REFERENCE: **AR-13-14**

By: *[Signature]* DATE: **10/22/13**

Director, Land Use Planning Commission

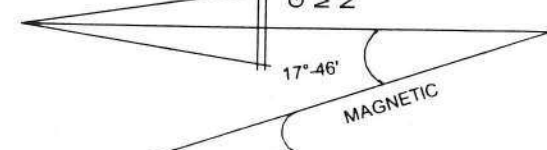


SCALE: 1" = 100'



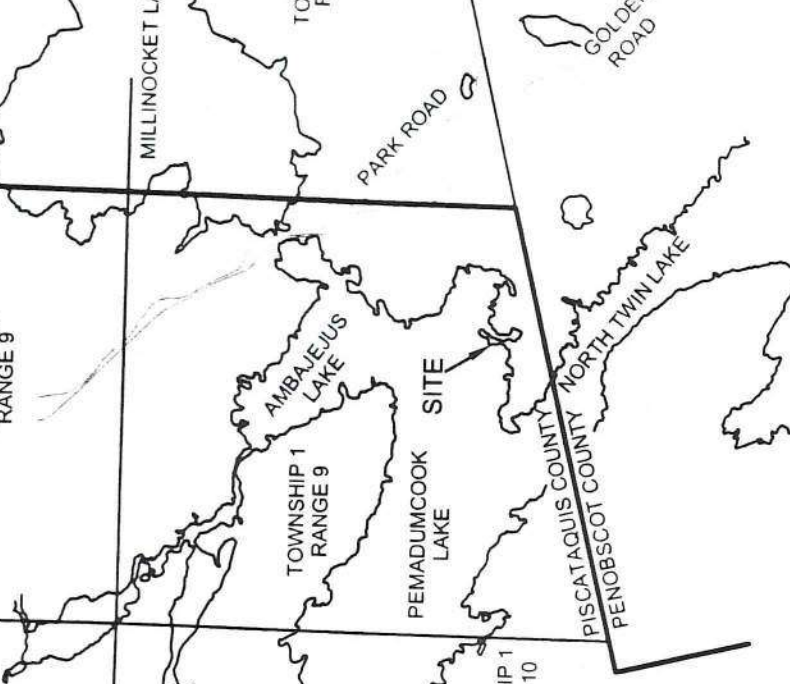
**LEGEND:**

- IRON NAIL SET
- IRON ROD/PIPE FOUND
- ⊗ WOOD POST FOUND
- ⊗ WELLSPRING
- ⊗ UTILITY POLE
- + GUY/ANCHOR
- ▭ BUILDING/SHED
- ▭ PROpane TANK
- ▭ STONE WALL
- ▭ TREE LINE
- ▭ PROPERTY LINE
- ▭ OVERHEAD WIRES
- ▭ GRAVEL ROAD/DRIVEWAY
- ▭ CULVERT
- ⑩ NEW LOT NUMBERS
- ⑩ OLD LOT NUMBERS
- ▭ COMMON AREA



**NOTES**

- (1) DOCUMENTS REFERENCED ON THIS PLAN ARE RECORDED IN THE PISCATAQUIS COUNTY REGISTRY OF DEEDS UNLESS OTHERWISE NOTED.
- (2) THE FULL POND ELEVATION OF AMBAJEJUS LAKE IS DEFINED AS ELEVATION 481.92 FEET AS REFERENCED TO THE USGS DATUM.
- (3) LAND BELOW THE 481.92 FOOT CONTOUR LINE IS OWNED BY GREAT LAKES HYDRO AMERICA, LLC. LOTS ABUTTING THIS LAND ARE SUBJECT TO RESTRICTIVE COVENANTS RECORDED WITH EACH DEED.
- (4) BEARINGS ARE ORIENTED TO GRID NORTH OF THE MAINE STATE COORDINATE SYSTEM, EAST ZONE, NAD 83.
- (5) DISTANCES SHOWN ON THIS PLAN ARE GRID DISTANCES REFERENCED TO THE MAINE STATE COORDINATE SYSTEM, EAST ZONE, NAD 83.
- (6) COORDINATES CITED HEREON ARE REFERENCED TO THE MAINE STATE COORDINATE SYSTEM, EAST ZONE, NAD 83.
- (7) THE FIELD LOCATION OF IMPROVEMENTS DEPICTED ON THIS SHEET WAS COMPLETED IN AUGUST 2011.
- (8) IRON NAIL SET NEAR THE 481.92 CONTOUR ARE LOCATED 45' THEREFROM UNLESS OTHERWISE NOTED.



- ⑩ NEW LOT NUMBERS
- ⑩ OLD LOT NUMBERS
- ▭ COMMON AREA

**PLISGA & DAY**  
LAND SURVEYORS  
72 MAIN STREET  
BANGOR, ME 04401  
(207) 947-0019

SHEET TITLE  
**Final Survey Plan**  
Ambajejus Lake Lots

Record Owner:  
**Katahdin Timberlands LLC**  
4 Hill Street  
Millinocket, Maine  
Deep Cove - Series

SHEET: **8** OF 11

DWG: 08/27

DATE: October 11, 2013

SCALE: 1" = 100'