

STATE OF MAINE

PISCATAQUIS, SS.
REGISTRY OF DEEDS
RECEIVED AND FILED

Oct. 23 2013

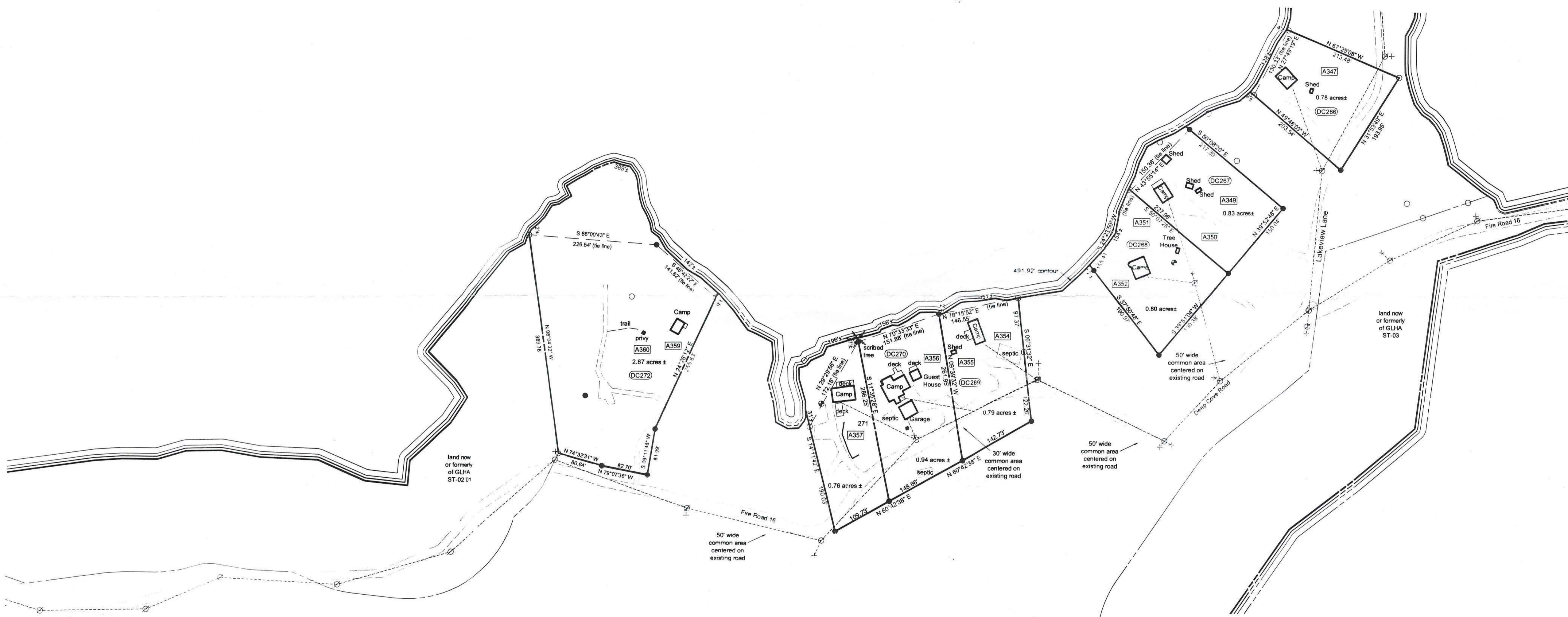
h 10 m 20 A.M.

Attest *Linda M. Smith*
Register

RECORDED AS MAP FILE

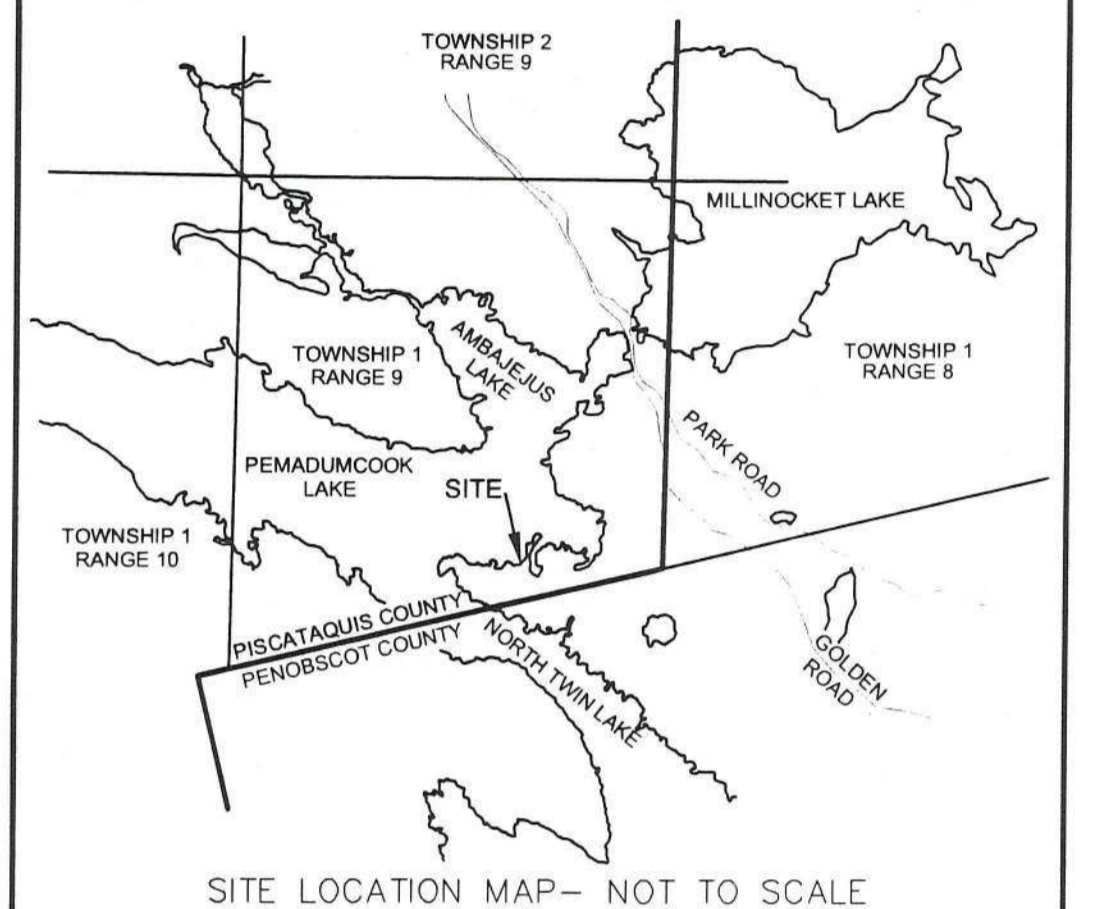
2013 #51

#51



NOTES

- (1) DOCUMENTS REFERENCED ON THIS PLAN ARE RECORDED IN THE PISCATAQUIS COUNTY REGISTRY OF DEEDS UNLESS OTHERWISE NOTED.
- (2) THE FULL POND ELEVATION OF AMBAJEJUS LAKE IS DEFINED AS ELEVATION 491.92 FEET AS REFERENCED TO THE USGS DATUM.
- (3) LAND BELOW THE 491.92 FOOT CONTOUR LINE IS OWNED BY GREAT LAKES HYDRO AMERICA, LLC. LOTS ABUTTING THIS LAND ARE SUBJECT TO RESTRICTIVE COVENANTS RECORDED WITH EACH DEED.
- (4) BEARINGS ARE ORIENTED TO GRID NORTH OF THE MAINE STATE COORDINATE SYSTEM, EAST ZONE, NAD 83.
- (5) DISTANCES SHOWN ON THIS PLAN ARE GRID DISTANCES REFERENCED TO THE MAINE STATE COORDINATE SYSTEM, EAST ZONE, NAD 83.
- (6) COORDINATES CITED HEREON ARE REFERENCED TO THE MAINE STATE COORDINATE SYSTEM, EAST ZONE, NAD 83.
- (7) THE FIELD LOCATION OF IMPROVEMENTS DEPICTED ON THIS SHEET WAS COMPLETED IN AUGUST 2007.
- (8) IRON RODS SET NEAR THE 491.92 CONTOUR ARE LOCATED 45' THEREFROM UNLESS OTHERWISE NOTED.



SITE LOCATION MAP - NOT TO SCALE

LEGEND:

- IRON REBAR SET
- IRON ROD/PIPE FOUND
- ⊠ WOOD POST FOUND
- ⊕ WELLS/SPRING
- ⊙ UTILITY POLE
- ⊕ GUY/ANCHOR
- ▭ BUILDING/SHED
- PROPANE TANK
- STONE WALL
- TREE LINE
- PROPERTY LINE
- OVERHEAD WIRES
- GRAVEL ROAD/DRIVEWAY
- CULVERT
- 10 NEW LOT NUMBERS
- 10 OLD LOT NUMBERS
- COMMON AREA

SHEET TITLE

Final Survey Plan

Ambajejus Lake Lots

Township 1 Range 9 Wells - Piscataquis County Maine

Record Owner:

Katahdin Timberlands LLC

4 Hill Street

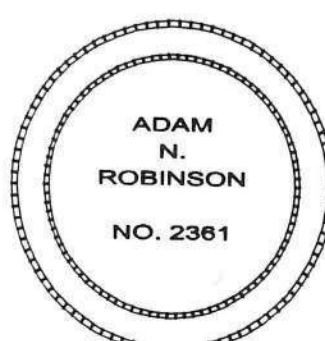
Millinocket, Maine

Deep Cove - Series

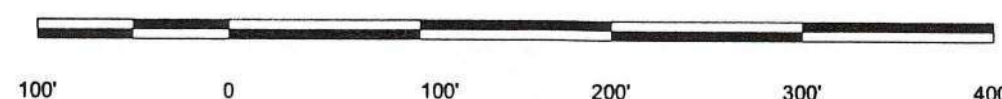
SURVEY STANDARD:

THESE PLANS WERE PREPARED FROM INFORMATION OBTAINED BY A SURVEY CONFORMING SUBSTANTIALLY TO THE REQUIREMENTS OF TECHNICAL STANDARDS CONTAINED IN CHAPTER 90, PART 2, OF THE RULES OF THE BOARD OF LICENSURE FOR PROFESSIONAL LAND SURVEYORS, EFFECTIVE APRIL 1, 2001.

Adam N. Robinson
ADAM N. ROBINSON, MAINE LICENSED
PROFESSIONAL LAND SURVEYOR NO. 2361



SCALE: 1" = 100'



LAND USE PLANNING COMMISSION
SIGNATURE BLOCK

THIS PLAN COMPLIES WITH PROVISIONS OF 12 MRSA SECTION 885, B & C. THIS PLAN HAS BEEN SIGNED BY THE LAND USE PLANNING COMMISSION SO THAT IT MAY BE FILED IN THE PISCATAQUIS COUNTY REGISTRY OF DEEDS AS REPRESENTING A LEGAL DIVISION OF LAND, EXCEPT AS MAY BE NOTED, LOTS DESCRIBED ON THIS PLAN MAY BE LEASED OR SOLD.

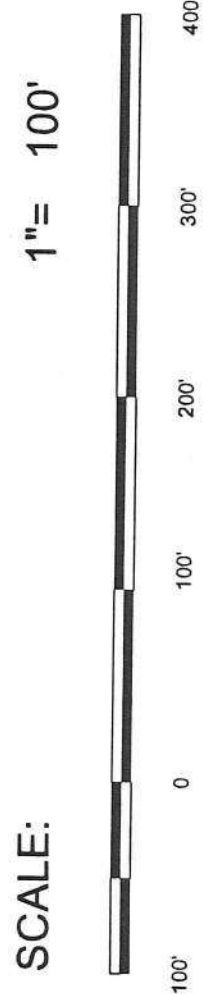
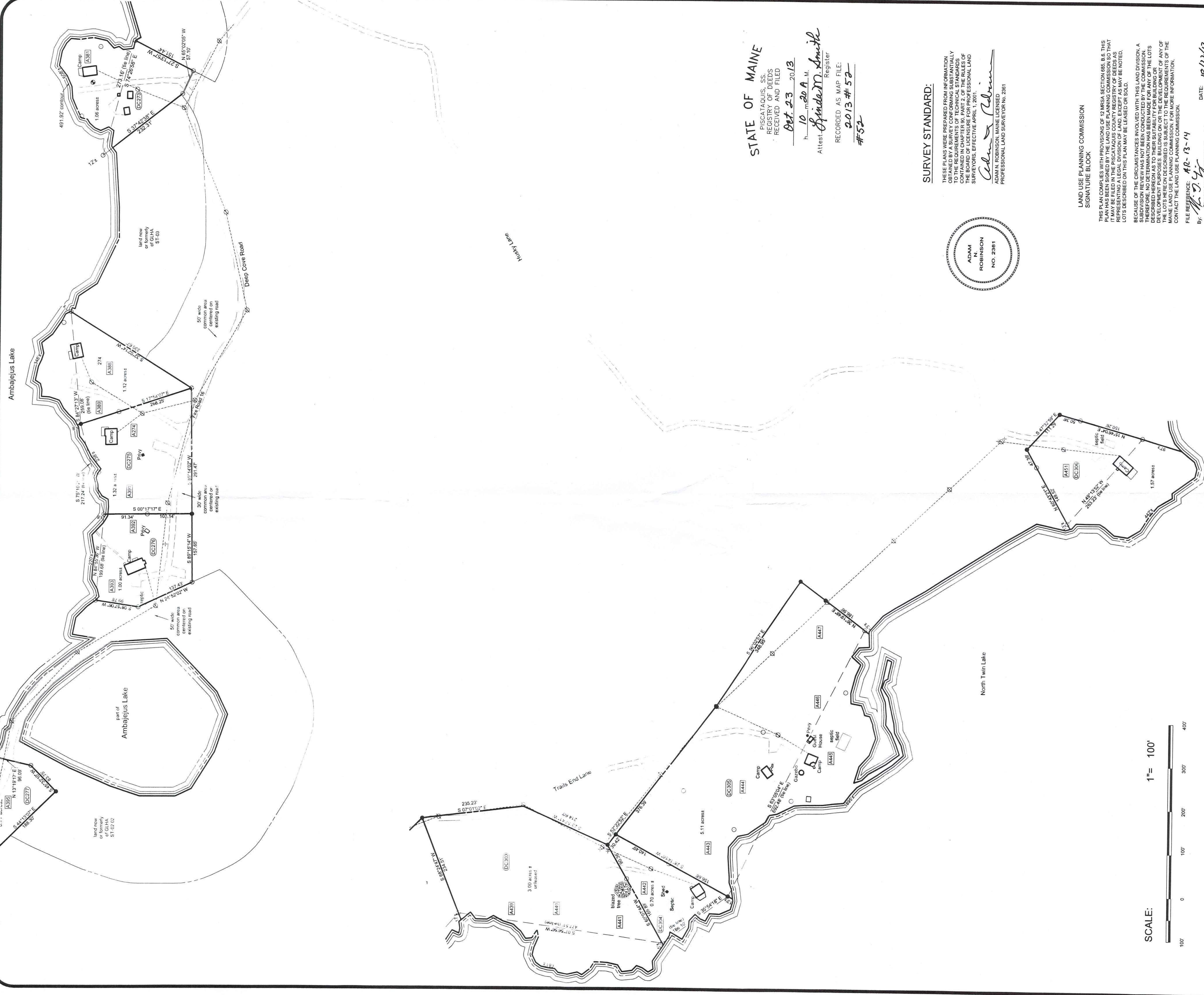
BECAUSE OF THE CIRCUMSTANCES INVOLVED WITH THIS LAND DIVISION, A SUBDIVISION REVIEW HAS NOT BEEN CONDUCTED BY THE COMMISSION. THEREFORE, NO DETERMINATION HAS BEEN MADE FOR ANY OF THE LOTS DESCRIBED HEREON AS TO THEIR SUITABILITY FOR BUILDING OR DEVELOPMENT PURPOSES. BUILDING ON OR THE DEVELOPMENT OF ANY OF THE LOTS HEREON DESCRIBED IS SUBJECT TO THE REQUIREMENTS OF THE MAINE LAND USE PLANNING COMMISSION. FOR MORE INFORMATION, CONTACT THE LAND USE PLANNING COMMISSION.

FILE REFERENCE: AL-13-14
By: *M. J. [Signature]* Director, Land Use Planning Commission
DATE: 10/22/13

PLISGA & DAY

LAND SURVEYORS
72 MAIN STREET
BANGOR, ME 04401
(207) 947-0019

DWG: 08137	SHEET: 9 OF 11
DATE: October 11, 2013	
SCALE: 1"=100'	

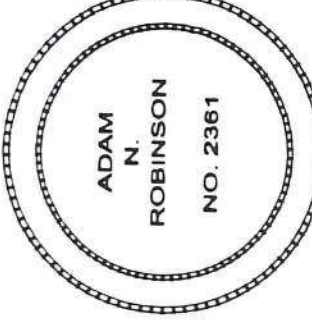


STATE OF MAINE
 PISCATAQUIS, SS.
 REGISTRY OF DEEDS
 RECEIVED AND FILED
 Oct. 23 2013
 h 10 m 20 A M.
 Attest *Spide M Smith*
 Register
 RECORDED AS MAP FILE:
 2013 # 52
 #52

SURVEY STANDARD:

THESE PLANS WERE PREPARED FROM INFORMATION OBTAINED BY A SURVEYOR IN ACCORDANCE WITH THE REQUIREMENTS OF TECHNICAL STANDARDS CONTAINED IN CHAPTER 664, PART 2, OF THE RULES OF PROFESSIONAL CONDUCT FOR PROFESSIONAL LAND SURVEYORS, EFFECTIVE APRIL 1, 2007.

Adam N. Robinson
 ADAM N. ROBINSON, MAINE LICENSED PROFESSIONAL LAND SURVEYOR NO. 2361



LAND USE PLANNING COMMISSION SIGNATURE BLOCK

THIS PLAN COMPLETES WITH PROVISIONS OF 13 MRS.A SECTION 18-B. THIS PLAN HAS BEEN SIGNED BY THE LAND USE PLANNING COMMISSION SO THAT IT MAY BE FILED IN THE PISCATAQUIS COUNTY REGISTRY OF DEEDS AS A SUBDIVISION RECORD. THE COMMISSION'S ACCEPTANCE DOES NOT GUARANTEE THE ACCURACY OF THE INFORMATION OR THE DATA ON WHICH THE PLAN IS BASED. THE COMMISSION'S ACCEPTANCE DOES NOT GUARANTEE THE ACCURACY OF THE INFORMATION OR THE DATA ON WHICH THE PLAN IS BASED. THE COMMISSION'S ACCEPTANCE DOES NOT GUARANTEE THE ACCURACY OF THE INFORMATION OR THE DATA ON WHICH THE PLAN IS BASED.

FILE REFERENCE: **AR-13-14**
 By: *M. J. G.*
 Director, Land Use Planning Commission
 DATE: **10/24/13**

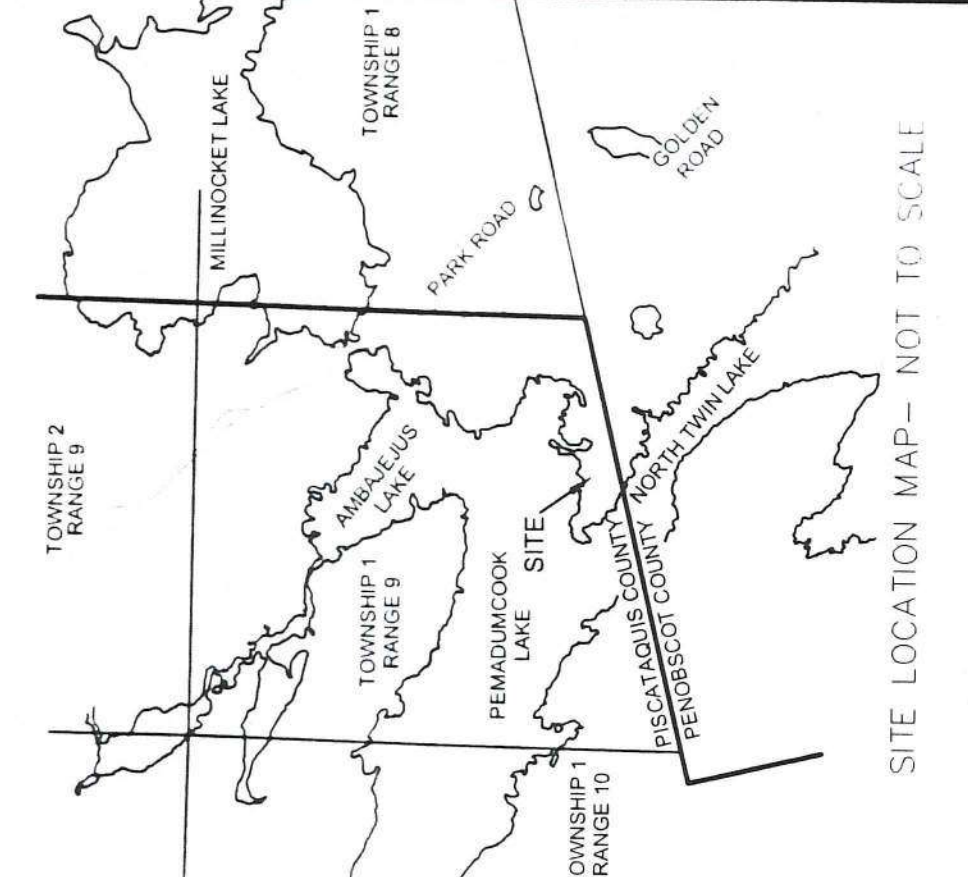
PLISGA & DAY
 LAND SURVEYORS
 100 STATE STREET
 BANGOR, ME 04401
 (207) 947-0019

SHEET TITLE
Final Survey Plan
 Ambajejus Lake Lots
 Record Owner:
Katahdin Timberlands LLC
 4 Hill Street
 Millisnoet, Maine
 Deep Cove - Series

SHEET: **10** OF 11
 DWG: 0837
 DATE: October 11, 2013
 SCALE: 1" = 100'

NOTES

- (1) DOCUMENTS REFERENCED ON THIS PLAN ARE RECORDED IN THE PISCATAQUIS COUNTY REGISTRY OF DEEDS UNLESS OTHERWISE NOTED.
- (2) THE FULL POND ELEVATION OF AMBAJEJUS LAKE IS DEFINED AS ELEVATION 491.92 FEET AS REFERENCED TO THE USGS DATUM.
- (3) LAND BELOW THE 491.92 FOOT CONTOUR LINE IS OWNED BY GREAT BOND AMERICA, LLC. LOTS ABUTTING THIS LAND ARE SUBJECT TO RESERVATION COVENANTS RECORDED WITH EACH DEED.
- (4) BEARINGS ARE ORIENTED TO GRID NORTH OF THE MAINE STATE COORDINATE SYSTEM, EAST ZONE, NAD 83.
- (5) DISTANCES SHOWN ON THIS PLAN ARE GRID DISTANCES REFERENCED TO THE MAINE STATE COORDINATE SYSTEM, EAST ZONE, NAD 83.
- (6) COORDINATES LISTED HEREON ARE REFERENCED TO THE MAINE STATE COORDINATE SYSTEM, EAST ZONE, NAD 83.
- (7) THE FIELD LOCATION OF IMPROVEMENTS DEPICTED ON THIS SHEET WAS COMPLETED IN AUGUST 2007.
- (8) IRON RODS SET NEAR THE 491.92 CONTOUR ARE LOCATED 45' THEREFROM UNLESS OTHERWISE NOTED.



LEGEND:

- IRON NAIL SET
- IRON ROD/PIPE FOUND
- ⊗ WOOD POST FOUND
- ⊕ WELL/SPRING
- ⊙ UTILITY POLE
- ⊕ GUY ANCHOR
- ▭ BUILDING/SHED
- ▭ PROPANE TANK
- ▭ STONE WALL
- ▭ TREE LINE
- ▭ PROPERTY LINE
- ▭ OVERHEAD WIRES
- ▭ GRAVEL ROAD/DRIVEWAY
- ▭ CULVERT
- ⑩ NEW LOT NUMBERS
- ▭ COMMON AREA

GRID NORTH
 MECS EAST ZONE
 NAD 83

MAGNETIC

SITE LOCATION MAP - NOT TO SCALE

STATE OF MAINE

PISCATAQUIS, SS.
REGISTRY OF DEEDS
RECEIVED AND FILED

Oct. 23 2013

h. 10 m. 20 A.M.

Attest: *Linda M. Smith*
Register

RECORDED AS MAP FILE:

2013 #53

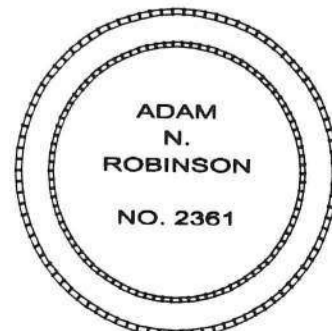
#53



SURVEY STANDARD:

THESE PLANS WERE PREPARED FROM INFORMATION OBTAINED BY A SURVEY CONFORMING SUBSTANTIALLY TO THE REQUIREMENTS OF TECHNICAL STANDARDS CONTAINED IN CHAPTER 90, PART 2, OF THE RULES OF THE BOARD OF LICENSURE FOR PROFESSIONAL LAND SURVEYORS, EFFECTIVE APRIL 1, 2001.

Adam N. Robinson
ADAM N. ROBINSON, MAINE LICENSED
PROFESSIONAL LAND SURVEYOR No. 2361

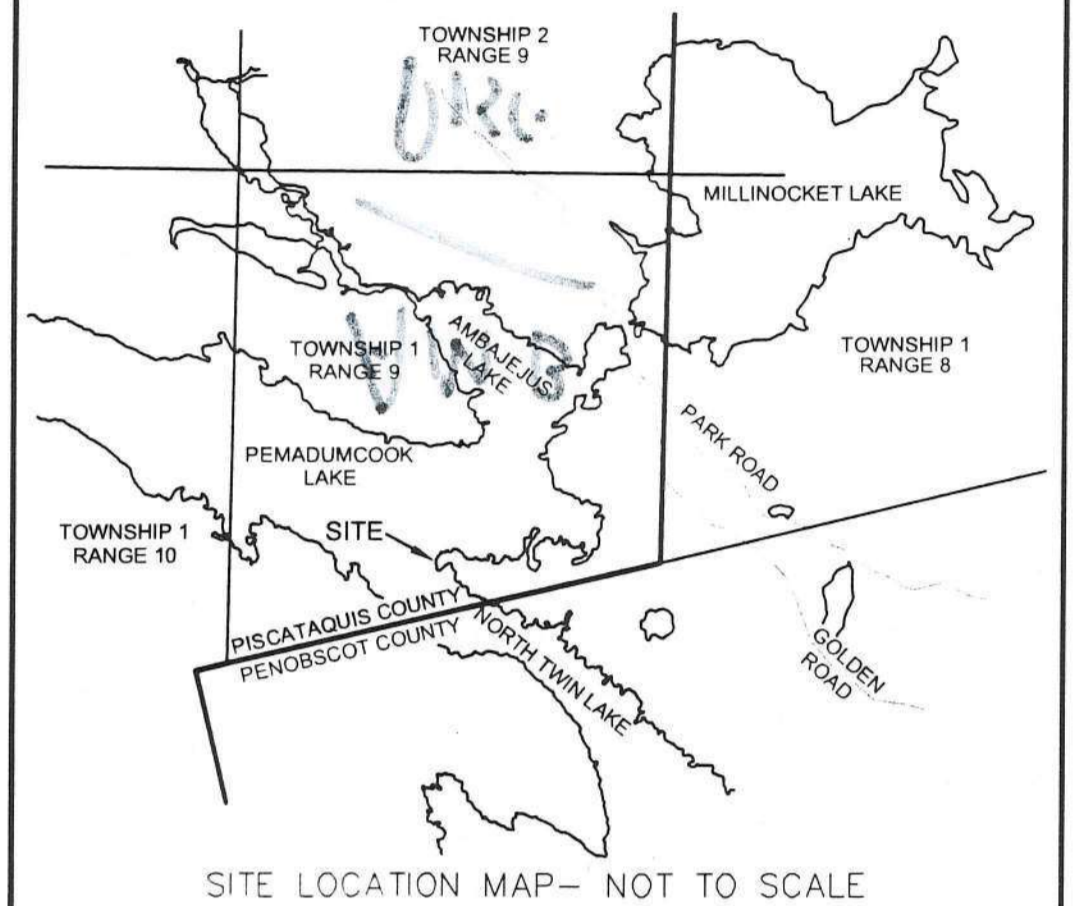


SCALE: 1" = 100'



NOTES

- (1) DOCUMENTS REFERENCED ON THIS PLAN ARE RECORDED IN THE PISCATAQUIS COUNTY REGISTRY OF DEEDS UNLESS OTHERWISE NOTED.
- (2) THE FULL POND ELEVATION OF AMBEJELUS LAKE IS DEFINED AS ELEVATION 491.92 FEET AS REFERENCED TO THE USGS DATUM.
- (3) LAND BELOW THE 491.92 FOOT CONTOUR LINE IS OWNED BY GREAT LAKES HYDRO AMERICA, LLC. LOTS ABUTTING THIS LAND ARE SUBJECT TO RESTRICTIVE COVENANTS RECORDED WITH EACH DEED.
- (4) BEARINGS ARE ORIENTED TO GRID NORTH OF THE MAINE STATE COORDINATE SYSTEM, EAST ZONE, NAD 83.
- (5) DISTANCES SHOWN ON THIS PLAN ARE GRID DISTANCES REFERENCED TO THE MAINE STATE COORDINATE SYSTEM, EAST ZONE, NAD 83.
- (6) COORDINATES CITED HEREON ARE REFERENCED TO THE MAINE STATE COORDINATE SYSTEM, EAST ZONE, NAD 83.
- (7) THE FIELD LOCATION OF IMPROVEMENTS DEPICTED ON THIS SHEET WAS COMPLETED IN AUGUST 2007.
- (8) IRON RODS SET NEAR THE 491.92 CONTOUR ARE LOCATED ±5' THEREFROM UNLESS OTHERWISE NOTED.



LEGEND:

- IRON REBAR SET
- IRON ROD/PIPE FOUND
- ⊠ WOOD POST FOUND
- ⊕ WELL/SPRING
- ⊙ UTILITY POLE
- ⊙ GUY/ANCHOR
- ▭ BUILDING/SHED
- PROpane TANK
- STONE WALL
- TREE LINE
- PROPERTY LINE
- OVERHEAD WIRES
- GRAVEL ROAD/DRIVEWAY
- CULVERT
- ⑩ NEW LOT NUMBERS
- COMMON AREA

SHEET TITLE

Final Survey Plan

Ambajelus Lake Lots

Township 1 Range 9 WELS - Piscataquis County Maine

Record Owner:

Katahdin Timberlands LLC

4 Hill Street

Millinocket, Maine

Deep Cove - Series

LAND USE PLANNING COMMISSION
SIGNATURE BLOCK

THIS PLAN COMPLIES WITH PROVISIONS OF 12 MRSA SECTION 685, B.6. THIS PLAN HAS BEEN SIGNED BY THE LAND USE PLANNING COMMISSION SO THAT IT MAY BE FILED IN THE PISCATAQUIS COUNTY REGISTRY OF DEEDS AS REPRESENTING A LEGAL DIVISION OF LAND. EXCEPT AS MAY BE NOTED, LOTS DESCRIBED ON THIS PLAN MAY BE LEASED OR SOLD.

BECAUSE OF THE CIRCUMSTANCES INVOLVED WITH THIS LAND DIVISION, A SUBDIVISION REVIEW HAS NOT BEEN CONDUCTED BY THE COMMISSION. THEREFORE, NO DETERMINATION HAS BEEN MADE FOR ANY OF THE LOTS DESCRIBED HEREON AS TO THEIR SUITABILITY FOR BUILDING OR DEVELOPMENT PURPOSES. BUILDING ON OR THE DEVELOPMENT OF ANY OF THE LOTS HEREON DESCRIBED IS SUBJECT TO THE REQUIREMENTS OF THE MAINE LAND USE PLANNING COMMISSION. FOR MORE INFORMATION, CONTACT THE LAND USE PLANNING COMMISSION.

FILE REFERENCE: A12-13-14

By: *M. J. Day*
Director, Land Use Planning Commission

DATE: 10/22/13

PLISGA & DAY

LAND SURVEYORS
72 MAIN STREET
BANGOR, ME 04401
(207) 947-0019

DWG:	08137	SHEET:	11 OF 11
DATE:	October 11, 2013	SCALE:	
SCALE:	1"=100'		